



DECOTECH

METAL PROFILE FACTORY

Local Manufacturer of High International Standard Ceiling and Partition Product

Made in Qatar



DECOTECH

METAL PROFILE FACTORY

Decotech Metal Profile Factory, As a leading Manufacturer and Supplier of a comprehensive range of building product that includes Expanded metal products, Partition and ceiling profiles and cable tray management systems, Under our brand name Deco Tech.

DecoTech Metal Profile Factory is a part of a Qasr Al Andalus Group with over 20 years of experience in the region in various sectors. The company has satisfied its domestic clients with various quality products and services since its inception. With a fully-equipped facility extending over 4500 SAM, in New Small and Medium Industrial estate at Salwa road Qatar, the factory is equipped with state of the art machinery for manufacturing its products. We differentiate ourselves by offering a complete solution for our clients (Design, Fabrication, & Supply). We can ensure timely project completion, end-to-end quality management and budget control. Our employees trained in the importance of value engineering, thus providing solutions, not just products.

Our team qualified, experienced engineers and technicians can design and build as per client specifications. We are consistently working on technical innovations in order to improve the characteristics of our products, and monitor our manufacturing processes continuously to optimize it to ensure our clients the highest levels of product quality and workmanship, including on-time completion.

Our mission is to create value for our customers by providing high quality service and products, while maintaining a high level of health and safety standards and at the same time ensuring a healthy environment. Our sense of social responsibility combined with moral business ethics will surely surpass customer expectations, which is of paramount importance to position technics globally as the best.

We assure

- ❖ Quality Products
- ❖ Competitive Prices
- ❖ Delivery on time and in full
- ❖ ISO Certified
- ❖ European Standard Approval
- ❖ Qatar Civil Defence Approval



GYPSUM CEILING AND WALL SOLUTION

EASE OF INSTALLATION

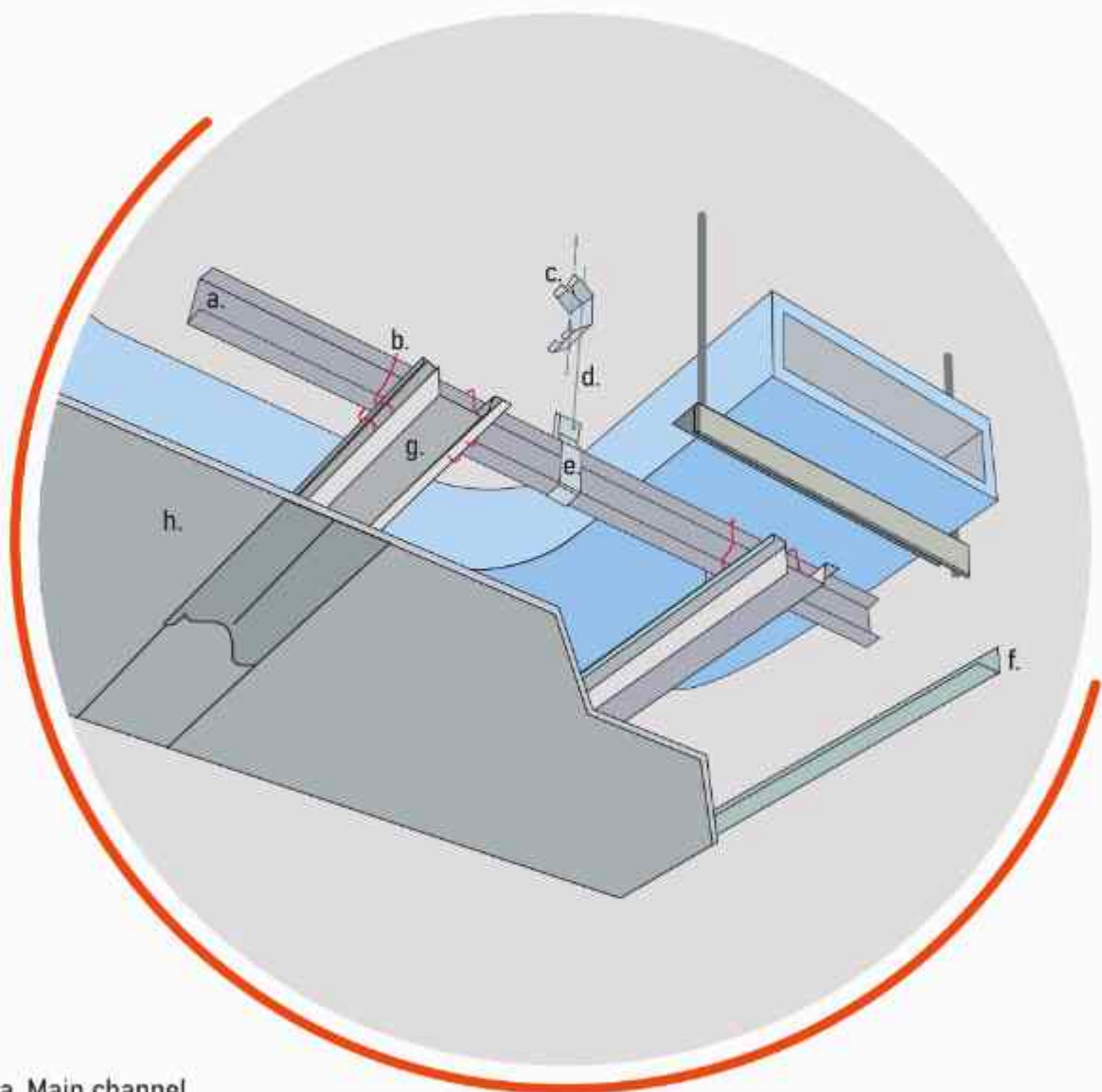
FIRE RESISTANT

SOUND PROOF

ELEGANT FINISHES



DECOTECH FURRING SYSTEM



- a. Main channel
- b. Wire coupling clip
- c. Adjustment clip
- d. Wire hanger
- e. Channel bracket
- f. G.I Wall Angle
- g. Furring channel
- h. Gypsum board

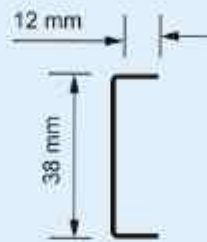


The concealed gypsum ceiling consist of screw fixed plasterboard attached to the ceiling furring system suspended from joists or a concrete ceiling.

COMPONENTS & ACCESSORIES

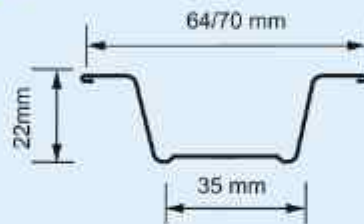
The Ceiling Furring System is manufactured from corrosion resistant galvanised steel in various thickness. Furring channels are widely used in ceiling systems as well as wall installations. Main channels are mainly used as grid systems for suspended ceilings. these channels are designed for providing seamless flat or curved suspended ceiling. Sections are available in standard length of 3000mm or special length are available upon request.

Main channel



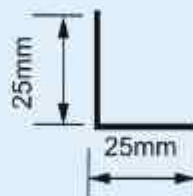
| Ref. | Dimension (mm) | | | Thickness (mm) |
|------|----------------|----|----|----------------|
| | A | B | C | |
| MC38 | 12 | 38 | 12 | 0.40-1.0 |

Furring channel



| Ref. | Dimension (mm) | | | Thickness (mm) |
|------|----------------|----|----|----------------|
| | A | B | C | |
| FC64 | 35 | 22 | 64 | 0.40-0.50 |
| FC70 | 35 | 22 | 70 | 0.60-1.0 |

Wall angle



| Ref. | Dimension (mm) | | Thickness (mm) |
|------|----------------|----|----------------|
| | A | B | |
| WA25 | 25 | 25 | 0.40-1.0 |

* Custom lengths available upon request

Wire coupling clip



Ref.C 38
Galvanised mild steel wire
Packed 500 per box

Adjustable spring



Ref.C 50
Spring steel 0.5 mm
thick packed 250 per box

Channel bracket

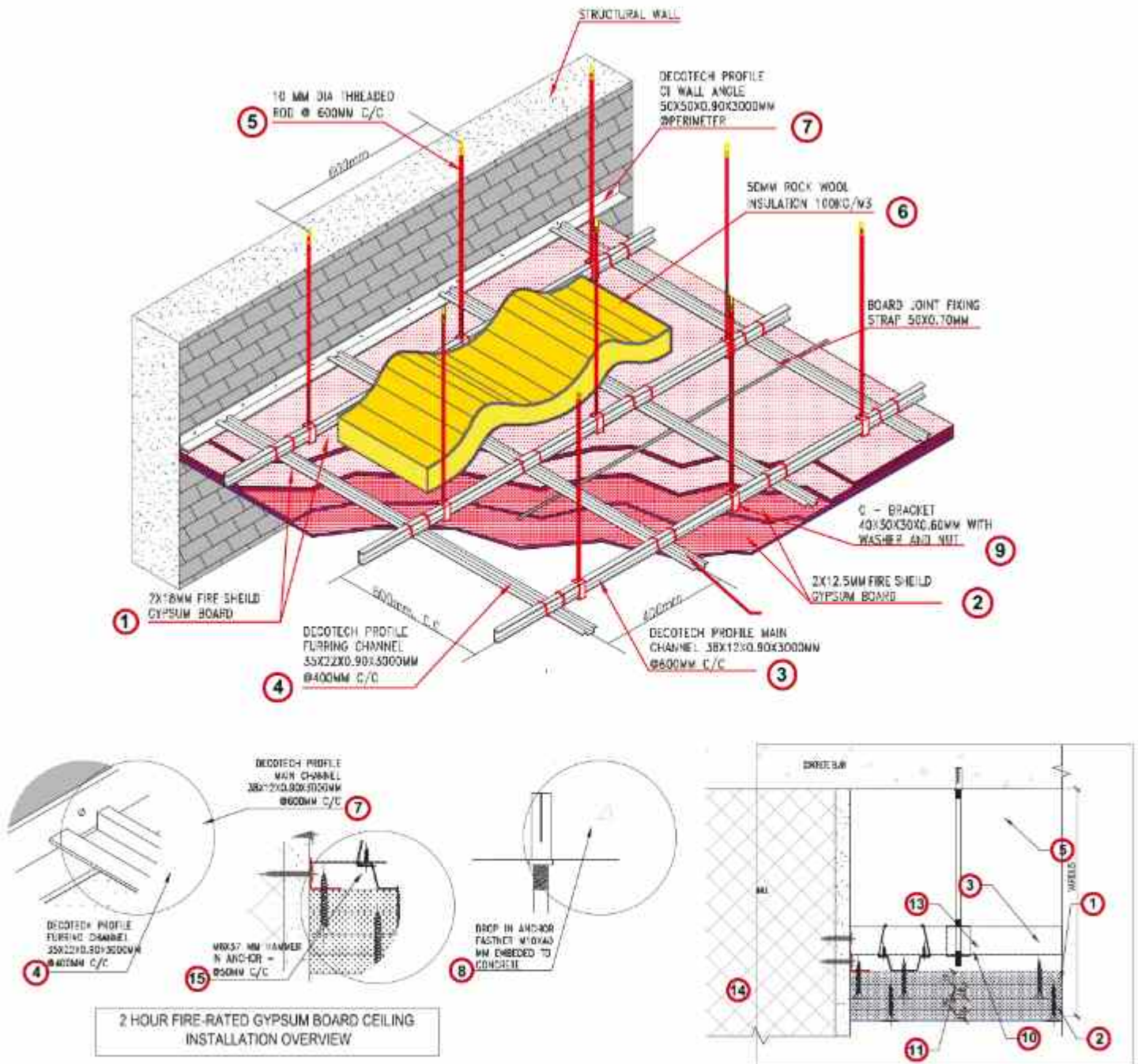


Ref.C 12
Galvanized
mild steel
packed
1000 per box

TECHNICAL SPECIFICATION

Manufactured to:
EN 14195 : 2014 | EN 10162 : 2003 | ASTM C645
Galvanised steel to: ASTM 653M / DX51D

FIRE RATED CEILING - DECOTECH DGC 120



- 1 2x18mm Fire Shield Gypsum Board
- 2 2x12.5mm Fire Shield Gypsum Board
- 3 Decotech Profile Main Channel 38x12x0.90x3000mm @600mm c/c
- 4 Decotech Profile Furring Channel 35x22x0.90x3000mm @400mm c/c
- 5 10 mm Dia Threaded Rod @ 600mm c/c
- 6 50mm Rock wool Insulation 60kg/m3
- 7 Decotech Profile CI Wall Angle 50x50x0.90x3000mm @perimeter
- 8 Drop in Anchor Fastener M10x40 mm Embedded to concrete

- 9 C - Bracket 40x30x30x0.60mm with Washer and Nut
- 10 M4.2x13 mm Wafer Head Drill Point Screw
- 11 M3.5x35.55 & M4.8x70 mm Dry wall screw @ 200mm c/c
- 12 Fibre joint tape
- 13 38x22x12mm Wire clip
- 14 Board Joint Fixing strap 50x0.70mm
- 15 M6x37 mm Hammer in Anchor @50mm c/c
- 16 Joint Compound

NOTE:

BOARDS ARE STAGGERED FROM SIDE TO SIDE AND LAYER TO LAYER

ALL CUT JOINTS PERPENDICULAR TO FURRING CHANNEL TO BE BACKED UP WITH FIXING STRAP

DUD-DCD SYSTEM

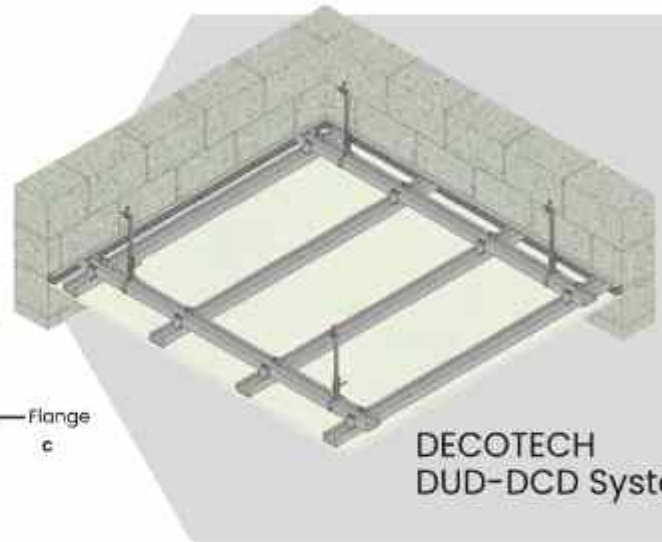
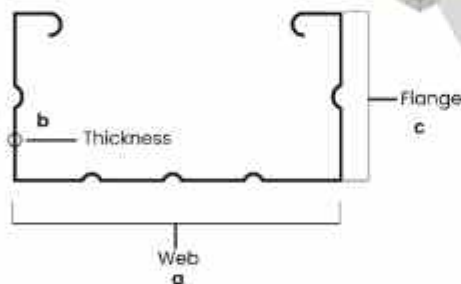
The DECOTECH DUD-DCD Suspended Ceiling System with metal grid consists of Decotech DCD and Decotech DUD channels.

DCD channels are attached to the ceiling slab with hooked wires and rapid hangers or with Heavy Hangers. DCD channels are attached to channels with Clips. The DUD channel is installed flush on the existing bearing system of the building with anchoring screws. This facilitates the proper alignments and installation of all base and bearing studs and channels. Gypsum Boards are installed on metal grids with screw attachment, starting at one end and gradually advancing towards the other.



Isometric View Wire Hanger

DCD Channel Section



DECOTECH DUD-DCD System

DECOTECH DCD Channels are galvanized lightweight steel sections to be used as primary/main and secondary/furring channels for Ceiling Systems. Their increased web width allows faster and easier installation and smoother joints.

FEATURES

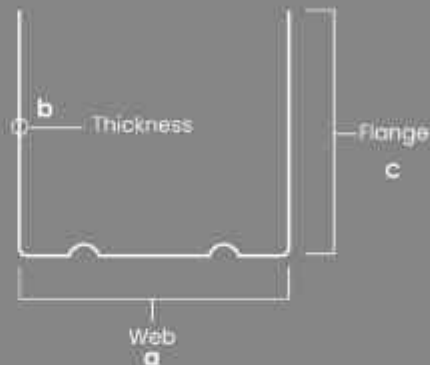
- Sturdy 0.6 mm sections with full set of compatible accessories.
- Only one type of channels for main and furring functions.
- Increased web width for faster/easier installation and smoother joints.

| Stud Type | Channel Web (a) (mm) | Channel Thickness (b)(mm) | Channel Flange (c) (mm) | Channel Length (mm) | Weight (Kg/m) | Zinc Coating Class (g/m ²) |
|----------------------|----------------------|---------------------------|-------------------------|---------------------|---------------|--|
| Decotech DCD Channel | 60 | 0.6 | 27 | 3000 | 0.584 | Z100-Z275 |

DUD-DCD SYSTEM



DUD Channel Section



DECOTECH DUD Channels are galvanized lightweight steel sections to be used as perimeter channels for Ceiling and Wall Lining Systems. All DUD Channels comply with EN 14195

| Stud Type | Channel Web (a) (mm) | Channel Thickness (b)(mm) | Channel Flange (c) (mm) | Channel Length (mm) | Weight (Kg/m) | Zinc Coating Class (g/m ²) |
|----------------------|----------------------|---------------------------|-------------------------|---------------------|---------------|--|
| Decotech DUD Channel | 28 | 0.6 | 27 | 3000 | 0.360 | Z90-Z275 |

ACCESSORIES



MULTI CONNECTOR

Galvanized connector piece used for extending DECOTECH DCD Channel in cases of long spanned ceilings.



DOUBLE DCD CONNECTOR

Galvanized clips to connect the main/primary DCD channels to the lower/furring DCD channels



STELL WIRE

Galvanized 4.0 mm thick used as suspender. Attached to basic ceiling with the help of steel ceiling dowels. Load bearing Capacity = 25 kg



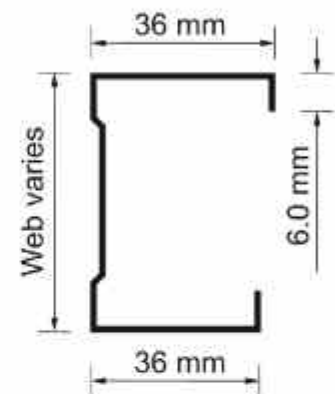
DCD HAGER

Accessories to be used with hanger wires. Hanger wire is attached to the clips of rapid hanger, connected to Upper DCD Channels. System recommended for ceiling heights up to 1500 mm.

DRY WALL SYSTEM

The dry wall partitioning systems are manufactured from corrosion resistant galvanised steel in standards sizes and custom lengths .Decotech product line provides variety of guages to economically meet your design requirements .

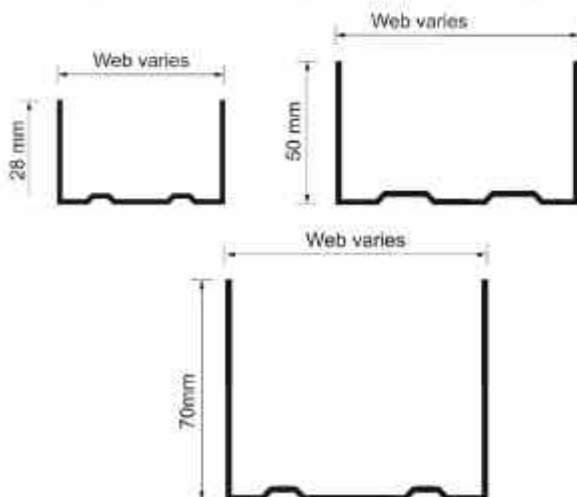
| Ref. | A(mm) | B(mm) | C(mm) | Thickness (mm) | length(mm) |
|------|-------|-------|-------|----------------|------------|
| S50 | 50 | 36 | 34 | 0.40 - 1.0 | 3000 |
| S65 | 65 | | | | |
| S70 | 70 | | | | |
| S75 | 75 | | | | |
| S90 | 90 | | | | |
| S98 | 98 | | | | |
| S125 | 125 | | | | |
| S140 | 140 | | | | |
| S150 | 150 | | | | |



* Custom lengths available upon request

Decotech Tracks, Deep Tracks and Extra Deep Tracks

These products are used for retaining studs at floor and ceiling junctions .Normally standard tracks are used; In the situation of deflection head and improved impact resistance Deep and Extra Deep tracks are utilized . Deep Tracks are used in case of 4200mm to 8000mm wall heights and Extra Deep tracks for partition height above 8000 mm.



| Ref. | Normal Track Flange (mm) | Deep Track Flange (mm) | Extra Deep Track Flange (mm) | Length (mm) |
|------|--------------------------|------------------------|------------------------------|-------------|
| T52 | 28 | 50 | 70 | 3000 |
| T67 | | | | |
| T72 | | | | |
| T77 | | | | |
| T92 | | | | |
| T100 | | | | |
| T127 | | | | |
| T142 | | | | |
| T152 | | | | |

- * Normal tracks available from guage 0.40- 1.2mm
- * deep tracks are available from thickness 0.50-1.2mm
- * extra deep tracks are available from thickness 0.60-1.0mm

CORNER BEAD

Decotech Drywall Corner Beads are provided for corner reinforcement and protection to drywall corners.

| Ref. | Dimension (mm) | | Thickness (mm) |
|------|----------------|----|----------------|
| | A | B | |
| CB24 | 24 | 24 | 3000 |



EDGE BEAD

Decotech Edge Bead are used to protect the exposed gypsum board edges and to form a defined edge. It will act as cap for the ends of gypsum board which may be exposed.

| Ref. | Dimension (mm) | Thickness (mm) |
|---------|----------------|----------------|
| EB12.50 | 12.50 | 3000 |



RECYCLED CONTENT

Decotech Profile components are produced using steel manufactured by major producers who use minimum 30% recycled ferrous scrap . Out of this 30% ferrous scrap.

- > 80% is post- consumer recycle content
- >20% is pre-consumer recycle content

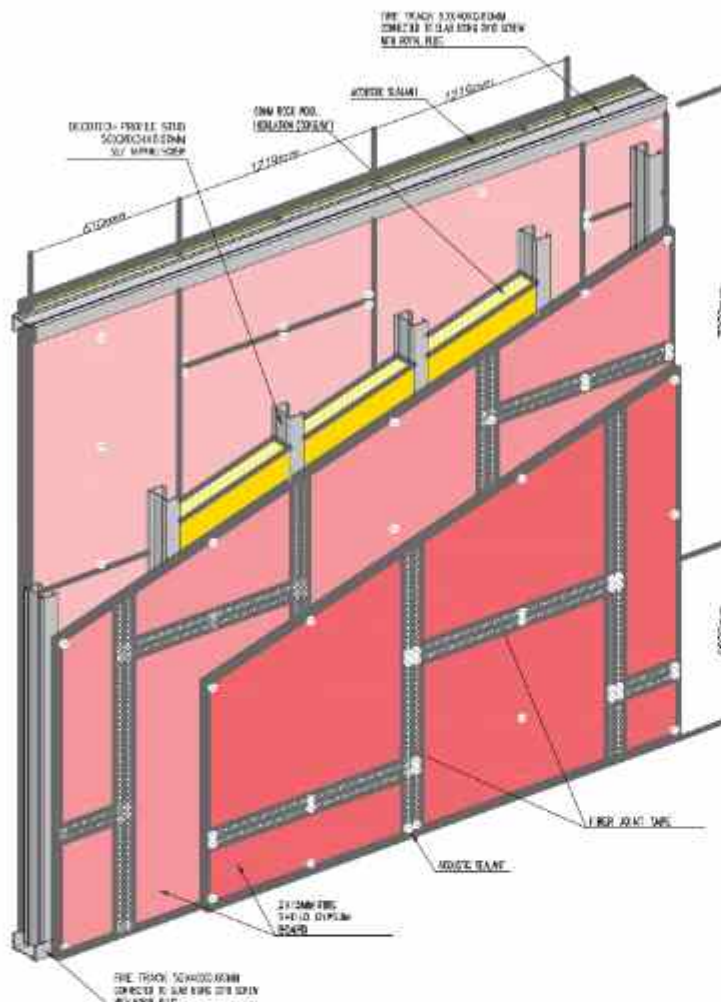
TECHINICAL SPECIFICATION

Manufactured to: BS 5234 : 1975 - Internal non load bearing partitioning
BS 2994 : 1976 - Cold rolled steel sections
BS 7364 : 1990 - Galvanised steel studs & channels.
ASTM C 645 - Standard specification for non structural steel framing members.

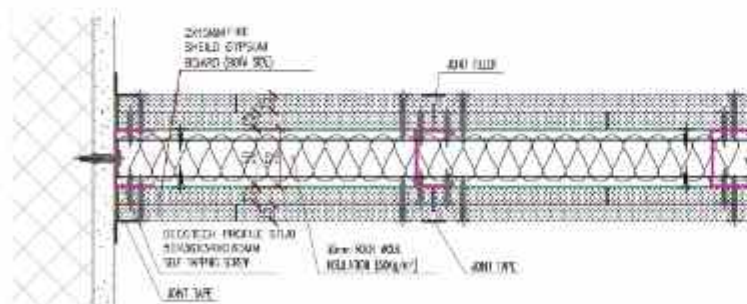
Galvanised steels to: ASTM 653, DX51D

FIRE RATED WALL SYSTEM - DECOTECH DW 120

INSTALLATION OVERVIEW

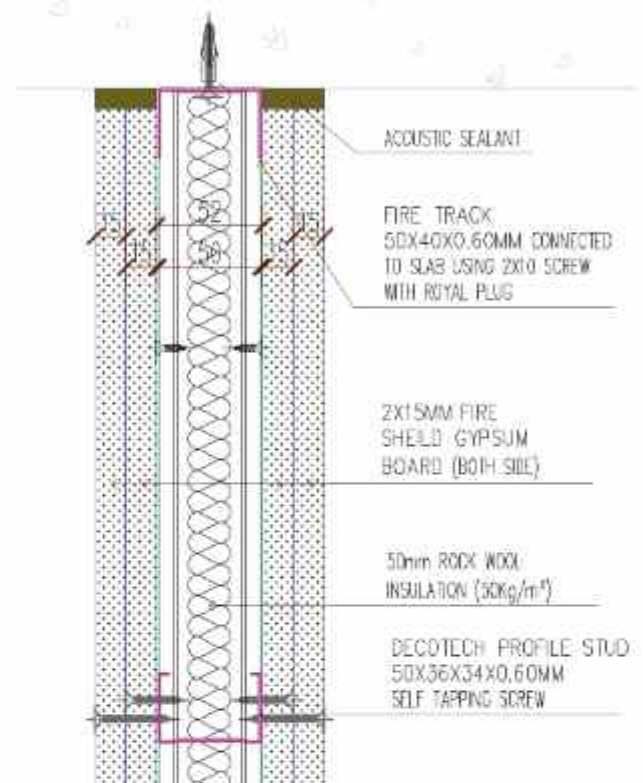


CONNECTION TO WALL

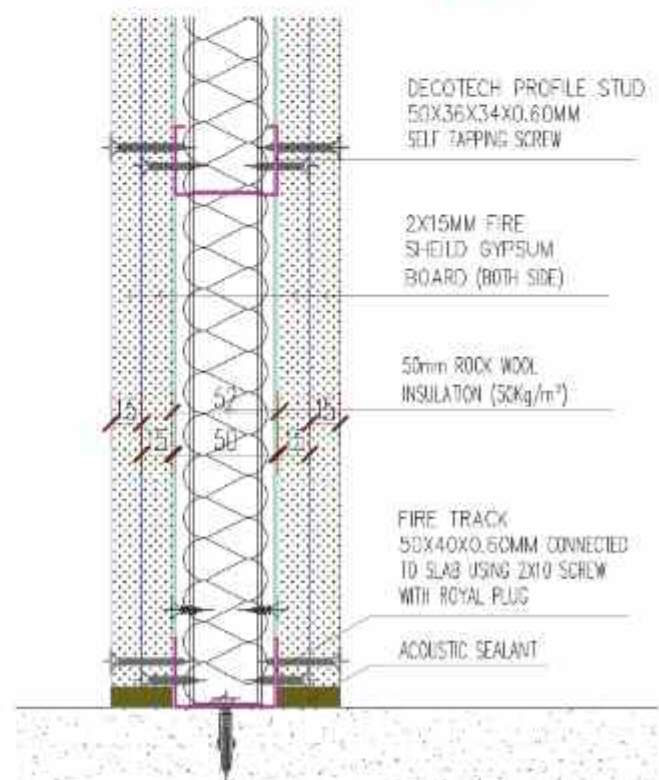


TYPICAL DETAIL

CEILING



CONNECTION TO FLOOR



TECHNICAL DATA

| WALL TYPE | FIRE-RATED GYPSUM PARTITION |
|----------------|-----------------------------|
| WALL THICKNESS | 102mm |
| WALL HEIGHT | 4000mm |
| WALL WEIGHT | 3000mm |
| FIRE-RATING | 120 Mins |
| APPLICATION | INTERNAL DRY AREA |

LINTEL

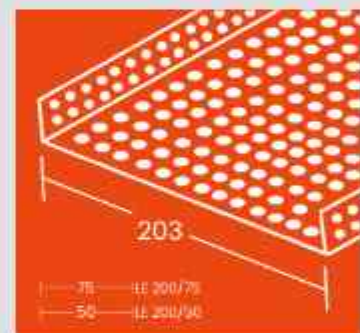
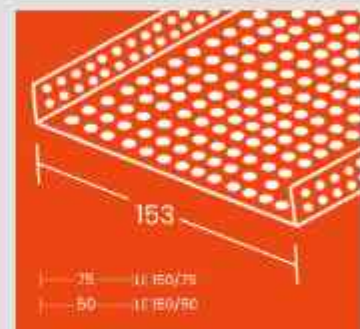
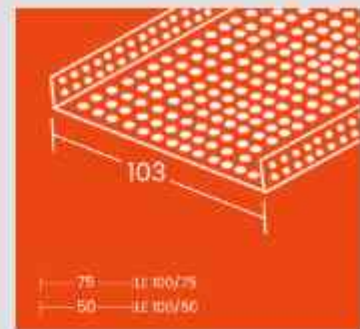
DECOTECH steel intels provide open span support over door and window apertures providing light weight support and efficient load bearing for all type of block. All Decotech Lintels are manufactured using prime steel galvanized with zinc can be coated with black thermoset polyester powder or black duel - coal epoxy paint which provides excellent long - term corrosion resistance.

Installation

- ▶ Lintels shall be simply supported at each solid base using a minimum end bearing of 200mm.
- ▶ Lintels should not be used if damaged or welded.
- ▶ Lintels must always be used within their weight capacity.
- ▶ Use support at center until mortar is dry to avoid high deflection.

Advantage

- ▶ Easy to use
- ▶ Time saving
- ▶ Cost Effective





DECOTECH METAL CEILING SOLUTIONS

Decotech Creates a wide variety of metal ceiling solutions to create a modern, aesthetically pleasing atmosphere.

Our modern sophisticated machineries and facilities have an ability to deliver tailored ceiling and wall panels of custom and unique sizes with elegant finishes.



DECOTECH METAL CEILING SYSTEM

Decotech metal ceilings can be produced in aluminium and steel in different thickness.



LIGHT REFLECTANCE

LR = 70 - 90% (ASTM E 1477)



CORROSION RESISTANCE

Salt spray tested for 1000 hours corrosion protection (ASTM B 177 -73)



SOUND ABSORPTION CLASS

Decotile with fire retardant non-woven acoustic fleece can attain sound absorption upto NRC 0.70-0.75 and α_w -0.70-0.75 (As per ASTM C423)
Higher sound absorption solutions can be provided with acoustic pads as per requirements.



HUMIDITY RESISTANCE

HR = 95%



REACTION TO FIRE

The reaction to fire classification accordance with ASTM E84 are expressed as class A.



ANTI-MICROBIAL

Hygienic coating can be provided upon request, having an excellent anti-bacterial properties (JIS Z 2801:200)



GREEN BUILDING MATERIAL

Fully recyclable and environment friendly.



CLEANABILITY

Washable by applying any household mild detergent like soap or window cleaner on the ceiling. Surface then wiping it with a clean soft cloth.

MANUFACTURING STANDARDS

ASTM C 635

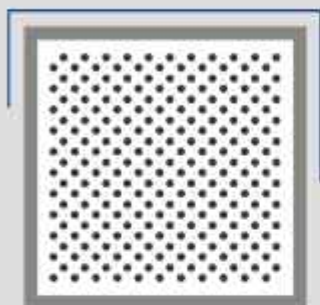
Standard Specification for Manufacture, Performance, and Testing of Metal Suspension Systems for Ceiling Panels.

MATERIAL SPECIFICATIONS

| | Tiles | Framing |
|---------|--|-----------------------------|
| BASE | Aluminum Alloy as per EN AW 1100 H44 series | Galvanized Steel Z140 Grade |
| COATING | 7 μ for the back + 20 μ for the face | 50 μ Power Coated |

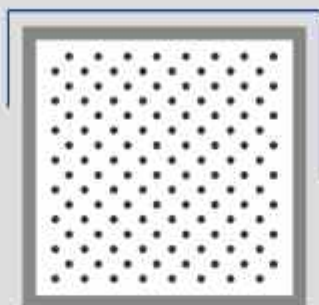
METAL RANGE PERFORATIONS

Predefined modules are available in 3 popular perforations.



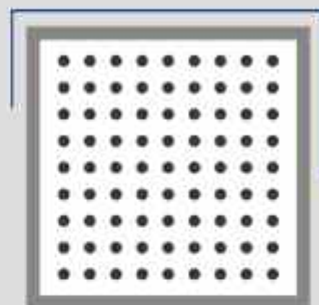
**Micro-Perforation
Perf. 15**

Hole Diameter : 1.5 mm
Open Area : 22%



**Standard Perforation
Perf. 18**

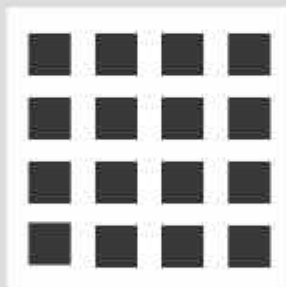
Hole Diameter : 1.8 mm
Open Area : 19%



**Perforation
Perf. 25**

Hole Diameter : 2.5 mm
Open Area : 16%

Decotile comes with wide range of perforation pattern of aesthetic choice also



ACCOUSTIC SOLUTIONS

Non - woven acoustic fleece provides a cost effective solution for general sound absorption requirements. As a solution that is bonded to the reverse of the metal tile it helps eliminate pattern staining issues that may occur with loose laid solutions.

Can attain NRC 0.70 - 0.75 and $\alpha_w = 0.70$ to it 0.75

In addition to the standard acoustic fleece, offers a range high absorption and attenuation acoustic pads.



COLOURS

Decotech colors for metal ceilings RAL 9003 (White) and additional special colors and wood effects can be provided upon special request.

RAL 9010

RAL 9016

RAL 9010

RAL 9006

RAL 9007

RAL 9007

GLOBAL WHITE

WOODEN EFFECTS

ASH

NATURAL
BAMBOO

CARAMEL
BAMBOO

MAPLE

OAK

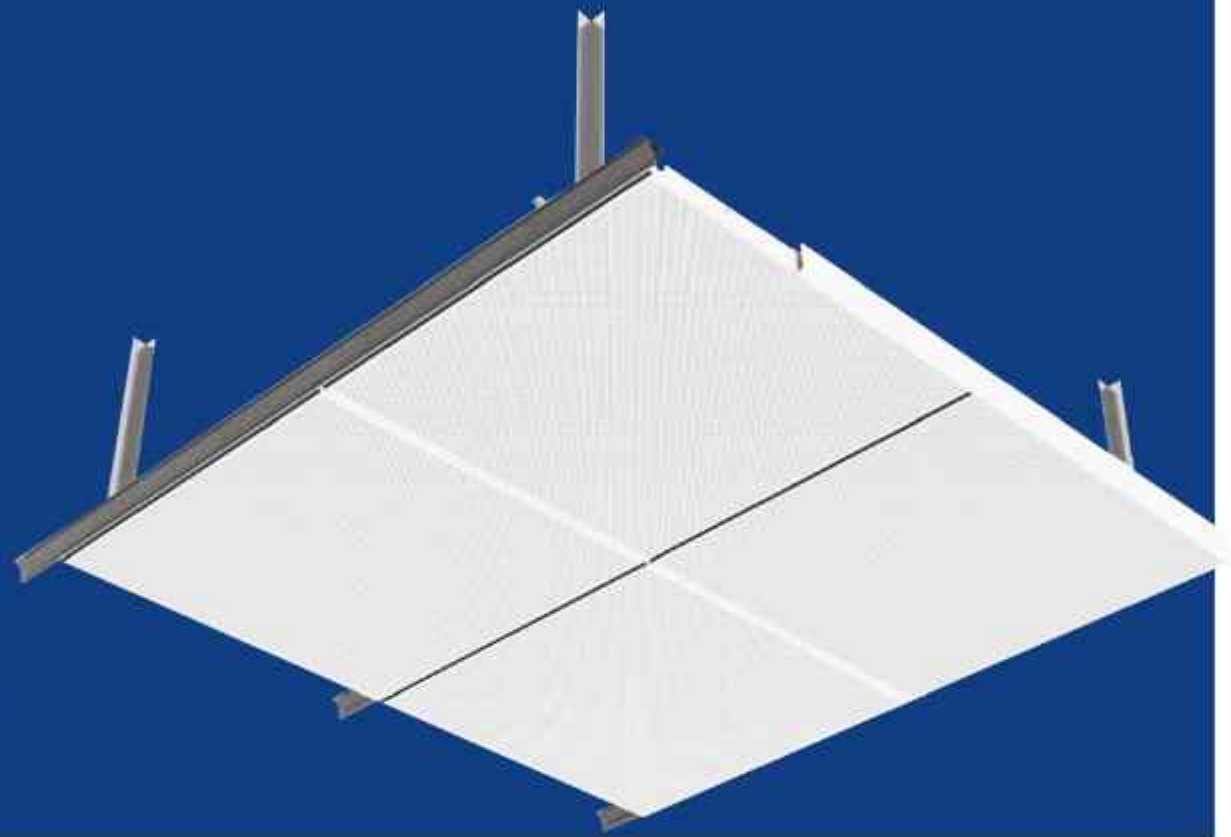
AMERICAN
CHERRY

AMERICAN
WALNUT



CLIP-IN METAL CEILING SYSTEM

Clip-in System



Clip-in Metal Ceiling System is a specialised suspended ceiling system designed for internal applications.

Fully demountable for an easy access to services, the tiles are clipped to a concealed suspension system.

APPLICATIONS

Suitable for use in all areas including :

Bathrooms
Kitchens
Corridors
Hospitals
Commercial buildings
Residential buildings

> Benefits



Fully demountable for easy access to services



Concealed design



Washable surface easy to clean



Excellent sound absorption performance



Durable and robust



Recyclable environment friendly



Anti-microbial

CLIP-IN METAL CEILING TILES

Clip-in tiles are available in perforated pattern for aesthetics and acoustic performance, and in plain finish for seamless design.

Clip-in System > Clip-in Tiles

| | |
|------------------------------------|-----------------------|
| Tile thickness ¹ (mm) | 0.6 and 0.7 |
| Tile modular size (mm) | 600x600 |
| Tile actual size ² (mm) | 600x600 |
| Tile per carton | 20 |
| Edge detail | Bevelled |
| Standard colors ³ | RAL 9003 and RAL 9010 |

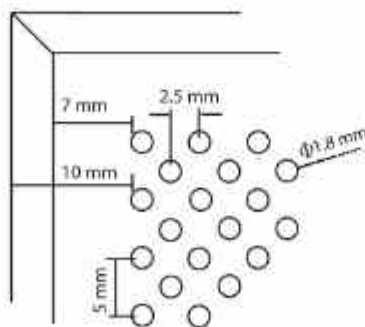
¹Other thicknesses from 0.5 to 0.9mm available upon request.

²Other sizes like 300x300, 600x1200 available upon request.

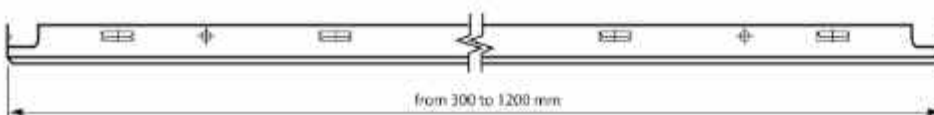
³Other colors available upon request.

PERFORATION

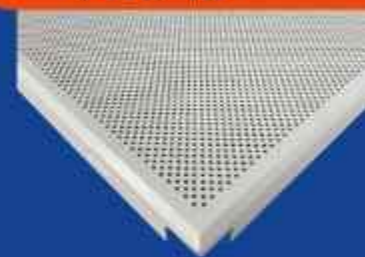
Open area : 19%



DRAWINGS



PERF 18



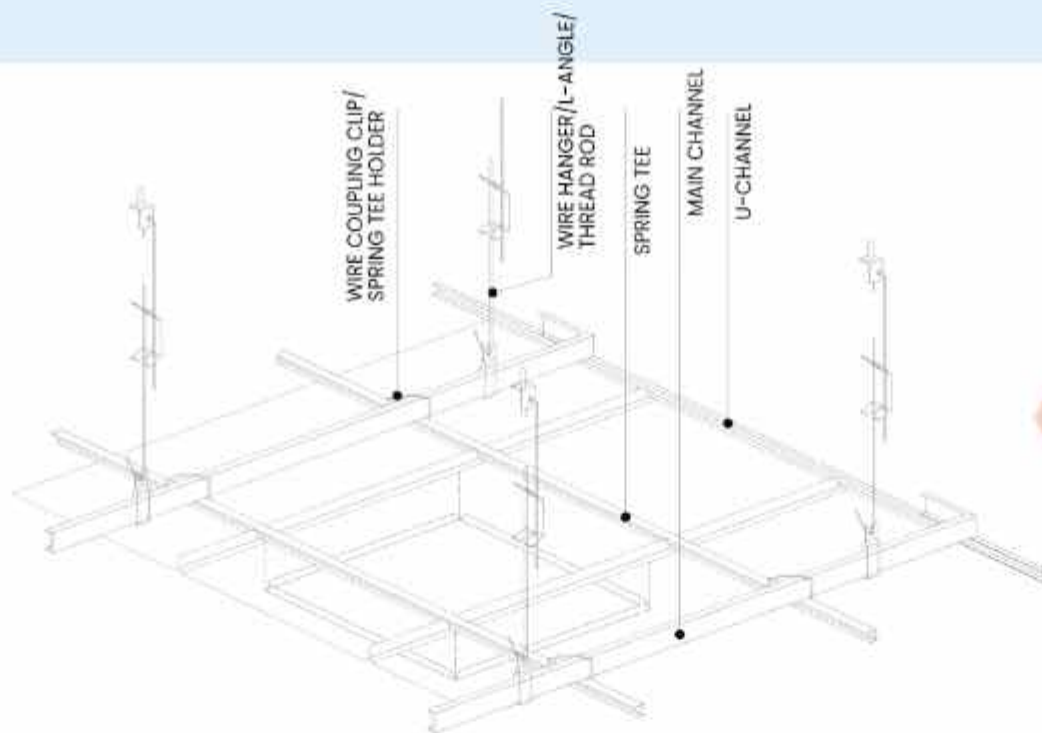
PLAIN



ALTERNATIVE HANGING SOLUTIONS



using thread rod



GI WALL ANGLE



Width - 25 mm
Length - 3000 mm
Gauge thickness - 0.50 mm
Linear meter weight - 0.18 kg

MAIN CHANNEL

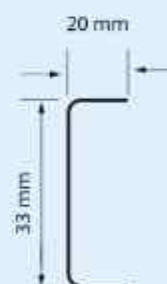
Width - 38 mm
Length - 3000 mm
Gauge thickness - 0.50 mm
Linear meter weight - 0.22kg



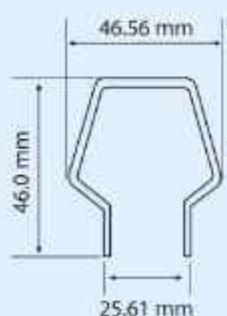
PERIMETER (U-CHANNEL)



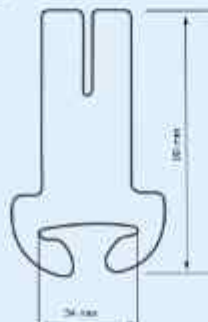
Material - PPGI
Width - 33 mm
Length - 3000 mm
Gauge thickness - 0.40 mm
Linear meter weight - 0.22kg



WIRE COUPLING/ SPRING TEE HOLDER



Diameter - 2.5mm



Thick - 0.40mm

CLIP IN TILES



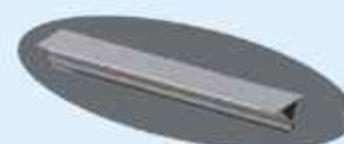
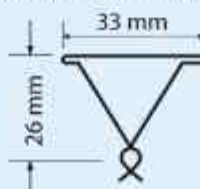
FLEECE



Special acoustic fleece made from non-woven fabric that allows noise reduction upto NRC 0.75

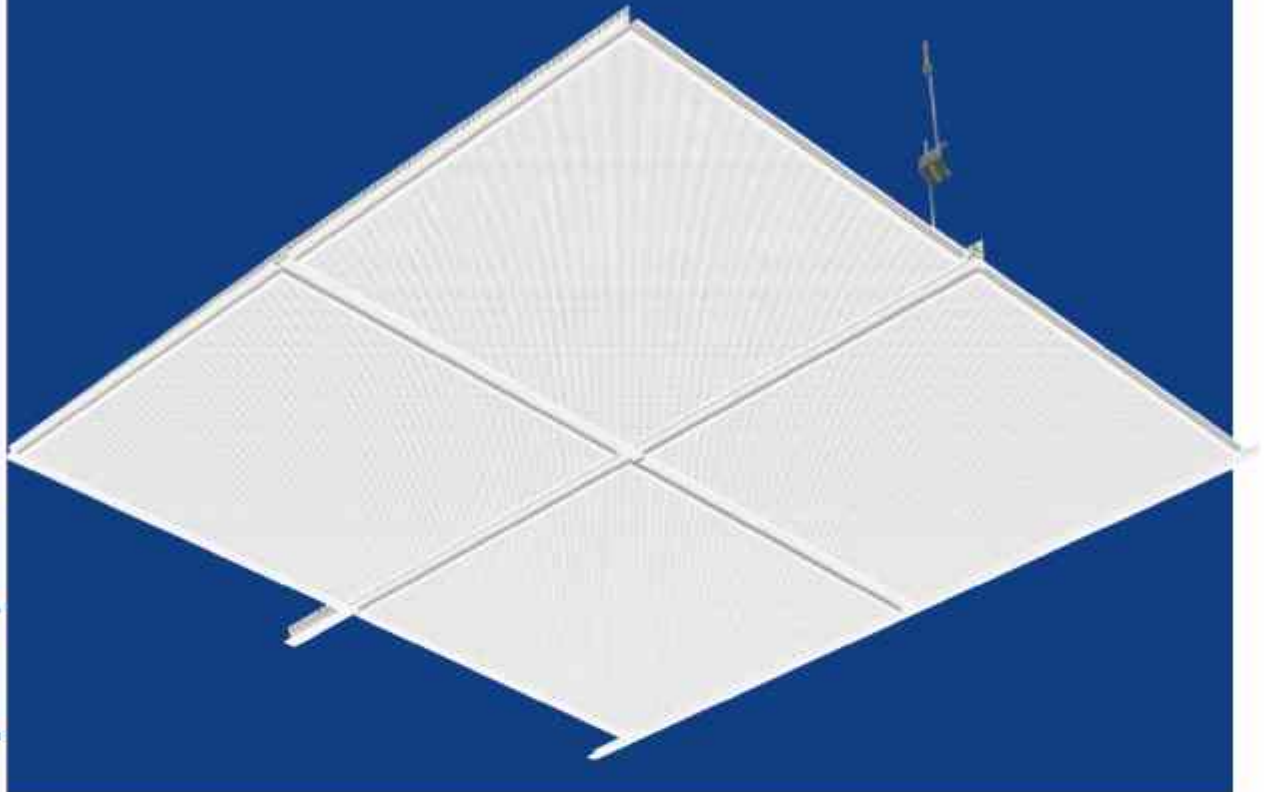
SPRING TEE

Width - 33 mm
Length - 3000 mm
Gauge thickness - 0.40 mm
Linear meter weight - 0.330kg



LAY-IN METAL CEILING SYSTEM

Lay-in System



Lay-in Metal Ceiling System is a specialised suspended ceiling system designed for internal applications.

Fully demountable for an easy access to services, the tiles are mounted in a semi exposed T Grid.

APPLICATIONS

Suitable for use in all areas including :

Bathrooms
Kitchens
Corridors
Hospitals
Commercial buildings
Residential buildings

> Benefits



Fully demountable for easy access to services



Exposed grid design



Washable surface easy to clean



Excellent sound absorption performance



Durable and robust



Recyclable environment friendly



Anti-microbial

LAY-IN METAL CEILING TILES

Lay-in tiles are available in perforated pattern for aesthetics and acoustic performance, and in plain finish for seamless design.

Lay-in **System** > Lay-in **Tiles**

TILE SPECIFICATION

Tile thickness¹ (mm) 0.6 and 0.7

Tile modular size (mm) 600x600

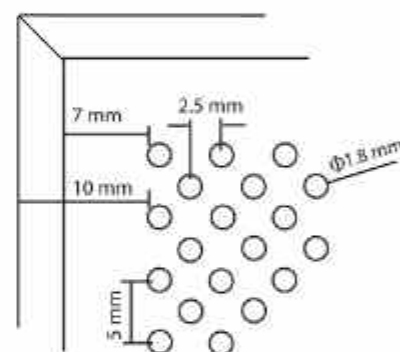
Tile actual size² (mm) 595 x 595

Tiles per carton 24

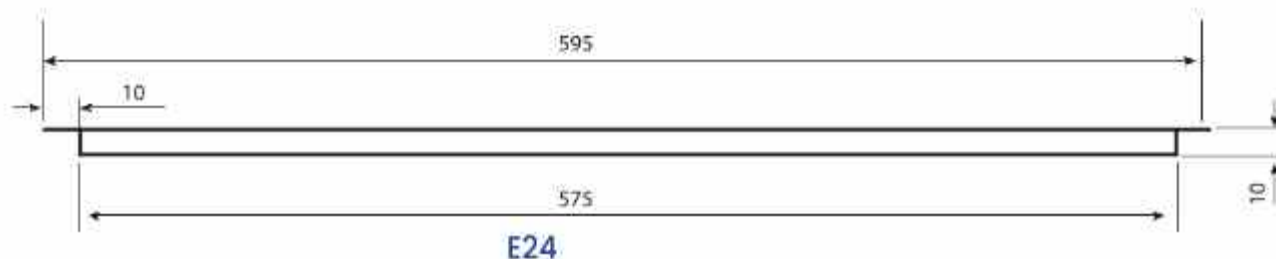
¹ Other thicknesses from 0.5 to 0.9mm available upon request

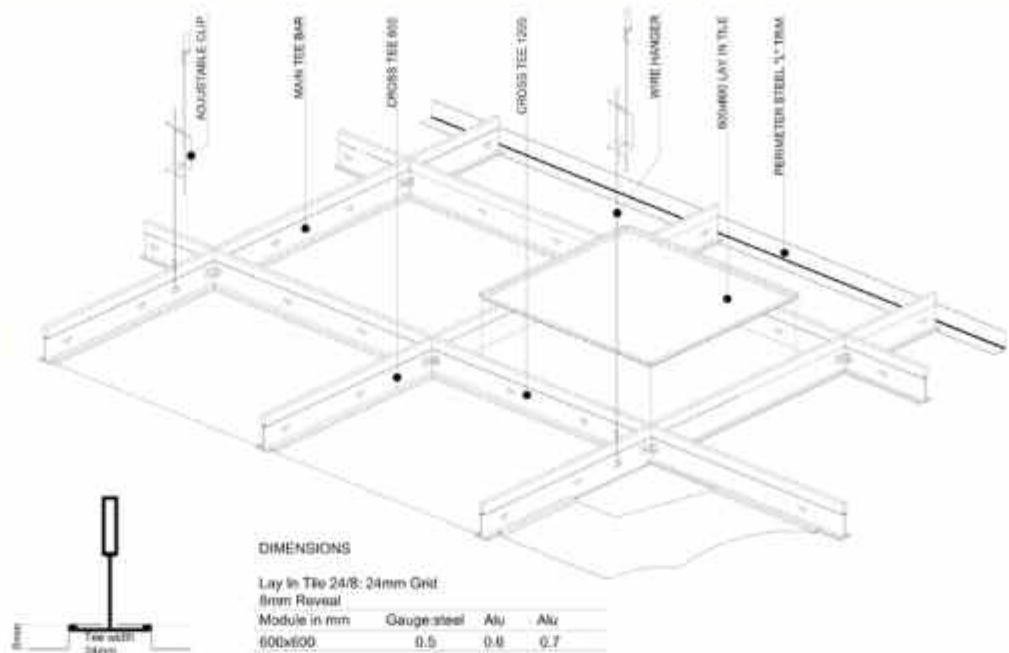
² Other sizes like 300x300 , 600x1200 available upon request

PERFORATION Open area : 19%



DRAWINGS



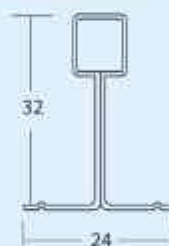


DECOTECH CROSS TEE



Length - 600 mm/1200 mm
Base Material - G.I
Capping - PPGI RAL 9003

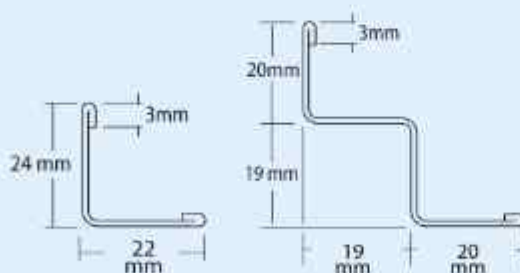
DECOTECH MAIN TEE



Length - 3600 mm
Base Material - G.I
Capping - PPGI RAL 9003

DECOTECH T24 ANGLE/ W - ANGLE

Length
3000 mm
Base Material
PPGI



ADJUSTABLE ANCHOR

Hanger rod length
upto 1500 mm
Diameter
3 mm



LAY IN TILES



FLEECE



Special acoustic fleece made from non-woven fabric that allows noise reduction upto NRC 0.75

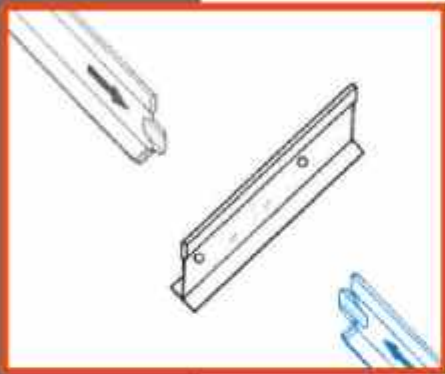
ALTERNATIVE HANGING SYSTEM

using thread rod



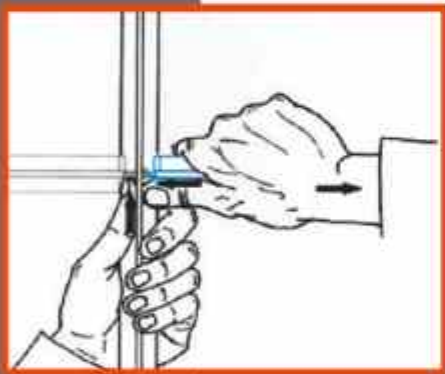
T-24 SUSPENSION GRID

Our ceiling suspension grids are double web cold-rolled sections, manufactured from hot-dipped galvanized, confirms to ASTM 653A. The tee section is with pre-painted capped. It is given to ensure that the system is manufactured to a very high quality level. All our grids has a 24mm table and the main runner is slotted for cross tees at 150 mm centers, to give maximum flexibility in the ceiling lay out.



Assembly

Each tee grids must be fitted always in the left position (Grey color) of the slot. Hear sound Click



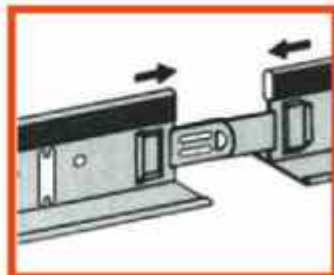
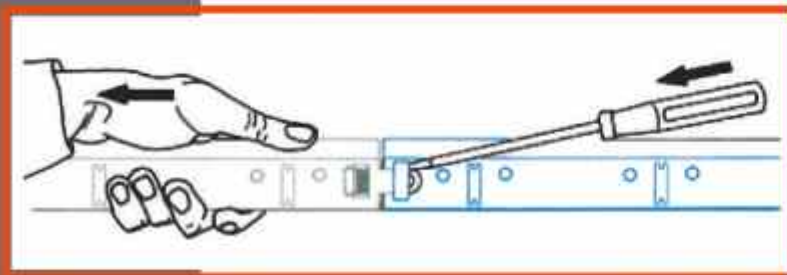
Disassembly

Need no tools!

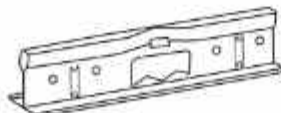
Push, Through the left thumb. Then the tee's edge and simultaneously we pull the tee with our right palm

Main Tee Disassembly

The disassembly must be done by a screwdriver with a slim tip.

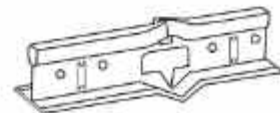


Before Fire



Fire Expansion Joint within each length of main runner

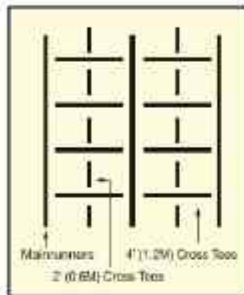
After Fire



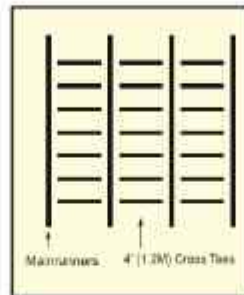
Effect after exposure to fire conditions

SUSPENSION GRIDS

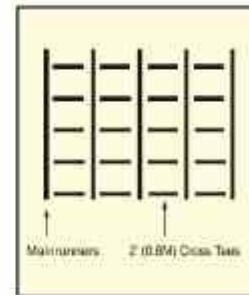
Types of combination



Mainrunners, Span: (1200 mm)



Mainrunners, Span: (1200 mm)



Mainrunners, Span: (6 mm)

1200x 600mm Sizes

DECOTECH Ceiling suspension grids comprises main runner installed at not more than 1200mm centres, securely fixed by pre-straightened suspension wire. The wire shall not more than 150mm from the main runner splices, or expansion joints, and the maximum distance from the wire to the perimeter of the ceiling shall not exceed 450mm and otherwise at 1200mm centres.

Also, the main runners splices are to be staggered and not less than 450mm from the perimeter. Spanning between main tees are 1200mm cross tees at 600mm centers.

600x600 Sizes

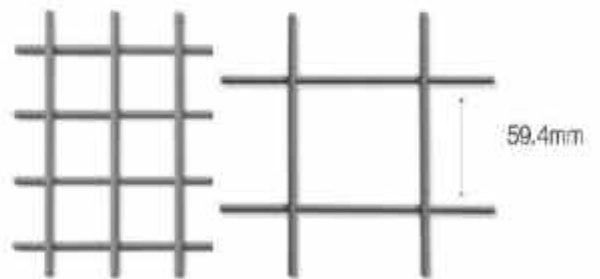
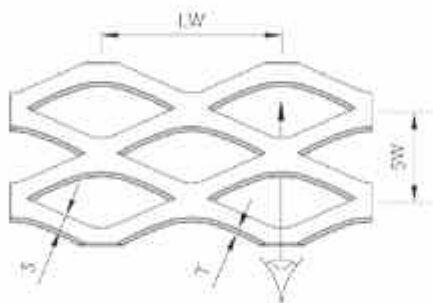
- ❖ Economical systems for residential and commercial application.
- ❖ Hot dipped galvanized steel system.
- ❖ Cross tees with overlapped ends to resist twisting and for better aesthetics.
- ❖ Load testing on the main Tees 17.90 kg/m tested according to ASTM C635.
- ❖ Fire-rated Main Tees at no extra cost.
- ❖ Suitable for Metal tiles, Gypsum Vinyl tile & GRG tiles.

MESH CEILING

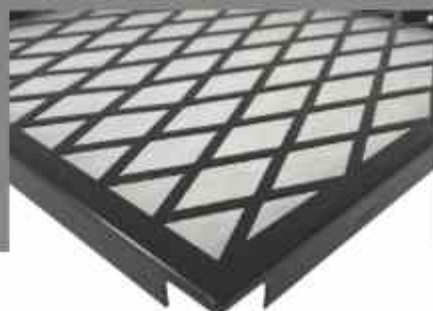
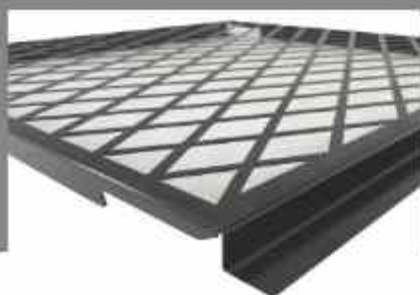
Mesh ceiling is an ideal choice to have contemporary design, an industrial look and is an option to exposed soffit.

Decotech provide a wide range of pattern and finish and can be manufactured in custom sizes.

- ▶ Custom panel size
- ▶ RAL Color as per customer choice
- ▶ custom mesh pattern

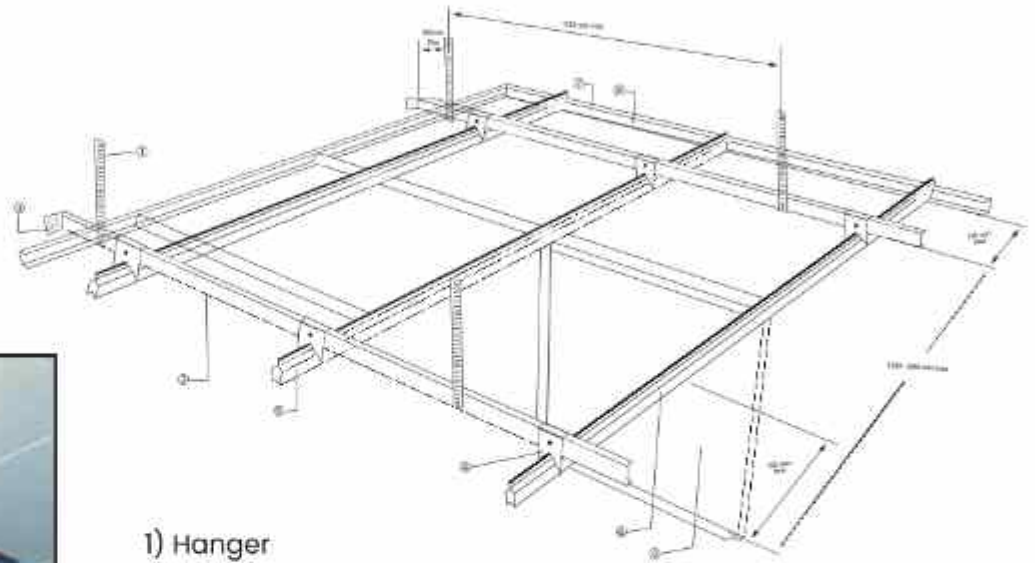


| | |
|-----------|------------------|
| LW | long way |
| SW | short way |
| S | strand width |
| T | strand thickness |



HINGE DOWN SYSTEM

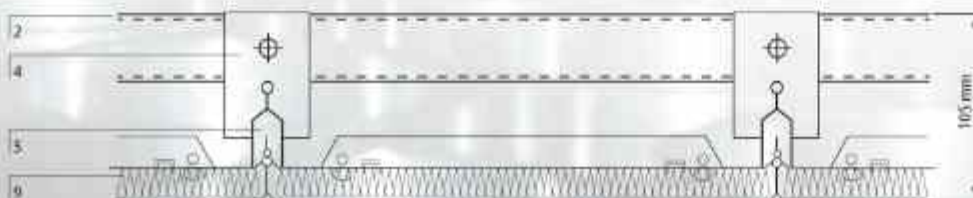
DECOTECH Hinge Down System can be used in the areas where frequent access to the ceiling void is needed. The range of High versatile clip-in metal tile offer hinge down access through out as standard.



- 1) Hanger
- 2) Main Channel
- 3) Wall Anchor
- 4) Channel Bracket
- 5) Decotech Omega Bar
- 6) Bar Joint
- 7) Edge Trim
- 8) Hinge Down Line
- 9) Hinge Down Tile



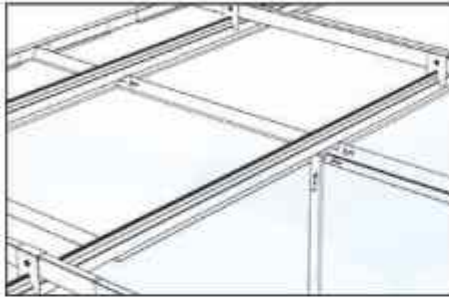
SECTION DRAWING





HINGE AND SIDE FACILITY

DECOTECH Hinge Down System allows every full tile to pivot and slide along the grid system. The hinge and slide feature facilitates easy access to large areas of the ceiling void for maintenance; tiles are retained within the ceiling grid avoiding damage and eliminating the need for storage.



WIDE SPANNING OMEGA BAR

The DECOTECH Omega bar has a maximum spanning ability of 2000mm. The wide spanning bar requires 25% less primary channels, top fixings and brackets, saving installation time and materials.

Suspension centres should be reduced when using high performing dB panels due to the additional weight or where loads are applied to the systems.



SECURITY CONSIDERATIONS

In areas where it is necessary to restrict access to the ceiling void, We offers a security clips that holds the tiles into the supporting grid. This is ideal for airports and other security driven environments, including schools and lavatories.

Tiles without security clips can be removed from the ceiling plane by means of an easy access tool.



CUSTOM CEILING & WALL PANEL

Decotech provide a wide range of customized ceiling & wall panel as per the custom room size and easthetic sense.

We can provide you different continous & non continous pattern as per you choice.

| | |
|---------------------|-------------------|
| Panel length | 600 mm to 2800 mm |
|---------------------|-------------------|

| | |
|--------------------|------------------|
| Panel width | 250 mm to 800 mm |
|--------------------|------------------|

| | |
|----------------|------------------------------------|
| Pattern | Plain, Perforated, Custom, Pattern |
|----------------|------------------------------------|

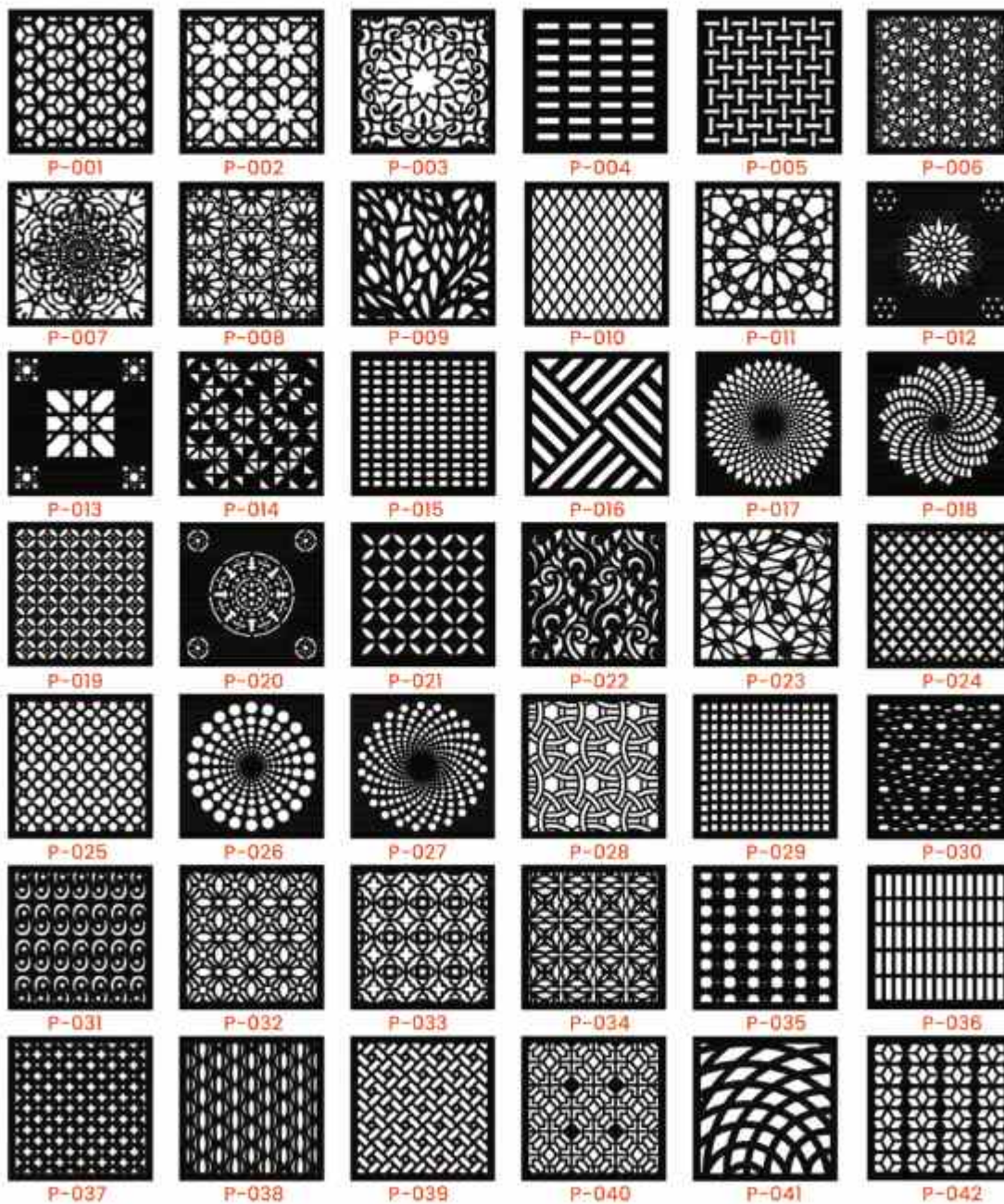
| | |
|---------------|--------------------------|
| System | Clip-in , Lay-in, Bolted |
|---------------|--------------------------|

| | |
|---------------|-------------------|
| Colors | RAL Colour Series |
|---------------|-------------------|



PATTERN CEILING

Decotile comes with different types of continuous & non continuous pattern. Pattern tiles come with custom sizes, thickness. Decotech can also provide pattern as per customer requirement apart from 250+ patterns available with us



DELIVERY

We assure timely delivery of materials in accordance to our terms and conditions

MARKETING

Our wide spread marketing network can ensure supply of right materials at right time.



CUSTOM PRODUCTS

Decotech is well equipped with latest machineries that can produce special lengths and sizes quickly and efficiently to keep out orders on schedule



PACKAGING

Decotech uses quality packaging materials to ensure that our products arrive to you in good conditions



LEEDS

Environmental Impact Statement

We offers environmental friendly alternative to wood and greatly reduce the impact on ecological issues.



A Quality assured company

Build with quality, that will last a lifetime

QUALITY

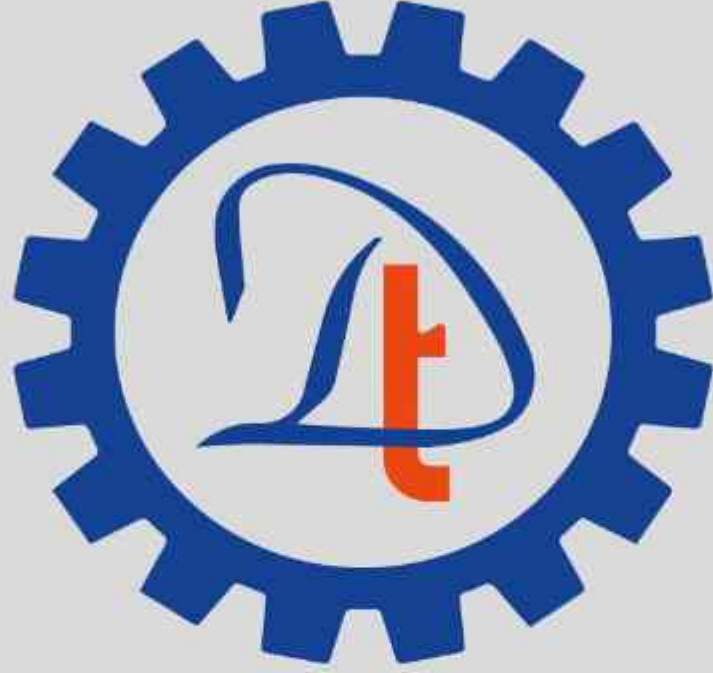
DECOTECH is dedicated to provide quality products and services that will satisfy the needs and expectations of our customers. we are committed to the continual improvement of our products and procesess to achieve our quality objectives and maximize value to our customer.



QUALITY OF STEEL

Recyclable

Decotech use 100% recyclable steel and wastage onsite is fully sent for recycling



DECOTECH

METAL PROFILE FACTORY

Building No.51, Street No.8, Zone No.81

New Industrial Area

Tel: +974-40012053

P.O.Box : 11218, Doha - Qatar

مصنع ديكوتيك للشرائح المعدنية

مبنى رقم ٥١، شارع رقم ٨، منطقة رقم ٨١

المنطقة الصناعية الجديدة

هاتف : ٩٧٤٤٠٠١٢٠٥٣

ص.ب: ١١٢١٨، الدوحة - قطر

email : profilefactory@decotechqatar.com