



Brass valve & Fitting

5 Layers Pipes PEX-Al-PEX

AZAR

صناعة الصمامات و وصلات الأنابيب



Evaluated **A** by Dubai Municipality



Azaran Trading L.L.C آذران للتجارة ش.ذ.م.م

Exclusive agent in the Middle East and Africa

The **Biggest** ball-valve manufacturer in the Middle East

2023-Rev.5

Index

Page 2	History & Introduction
Page 3	Certificates & Standards
Page 4	Valves For Gas
Page 10	Valves Specific For domestic water use
Page 22	Press Fittings
Page 26	Compression Fittings
Page 30	5 Layers Pipes PEX-AL-PEX





About us

Azaran Trading L.L.C, a branch of marketing of the sales department of Azaran Industrial Group (AIG), is the exclusive agent with the mission of representing AIG in the Middle East and Africa. AIG is a pioneer company in Iran with a national and regional reputation for good quality in products related to HVACR field.

The company is actually a three-branch manufacturing enterprise since 1984: a well-developed branch for manufacturing brass products like ball valves, fittings etc., another branch involved in manufacturing multi-layer

Pex-Al-Pex pipes and the third branch highly professional in producing exact and robust machineries mostly engaged in brass production lines like transfer machines.

To fulfill its mission AIG, with 550 employees and 400,000 Square feet workshops and buildings, benefits from updated technology like CNC machineries, six axis Gildameiter machines, operator free presses like Mecolpress, well equipped labs and lots of other precise machineries. All this is well supported with a highly robust professional engineering knowledge which is developed and preserved through nearly 40 years of industrial production. All these efforts have resulted in gaining approval certificate like EN 331 , EN 13328 ,EN ISO-228, TUV Austria and CE from Europe etc.

What we established through all these years follows one major end meeting our customers' needs and satisfaction nation-wide and regional.

Now with establishing our branch in UAE we want to extend our services to meet the needs of a wider range of customers in construction field.

Azaran Trading L.L.C benefiting from professional knowledge in marketing hopes to follow AIG mission in the MIDDLE EAST and Africa



Certificates & Standards





Valves For Gas

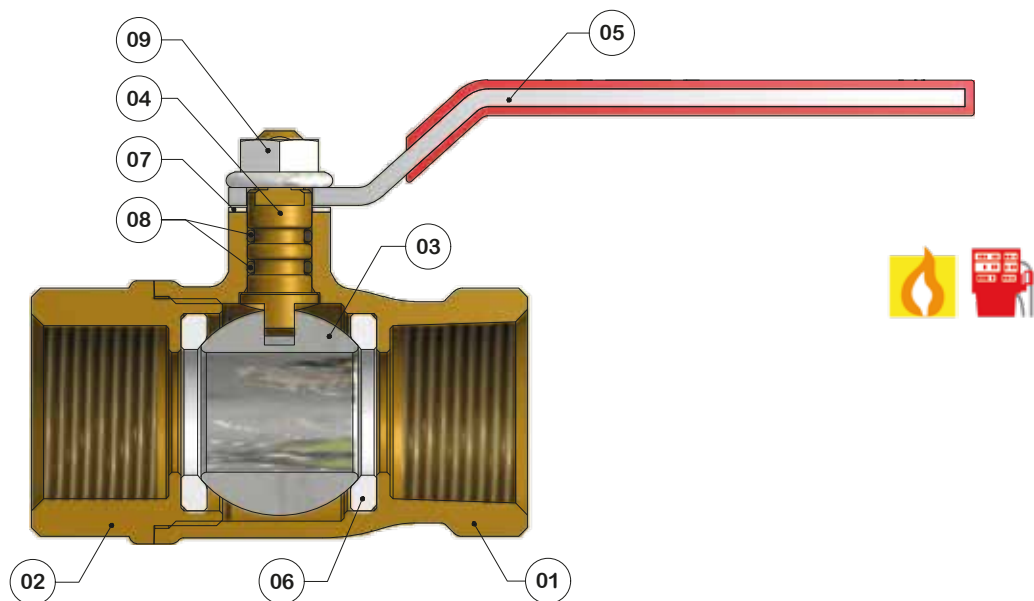
Ball valves for Gas made of Brass , under the following standards

- National standard of ISIRI4047
- International standard of EN331(Class MOP5)

Application :

- Civil use for natural gas distribution systems
- Oil and gasoline distribution systems
- Non-corrosive fluids

* It is possible to produce these valves by changing the type of thread and plating.



MATERIAL	ITEM	No.
Brass (MS58)	Body	01
Brass (MS58)	Body Cap	02
Brass (MS60)(Nickel & chrome plated)	Ball	03
Brass (MS60)	Stem	04
Steel (Zinc-plated, P.V.C covered)	Handle	05
P.T.F.E	Ball Seat	06
P.E	Thrust Washer	07
N.B.R	O-rings	08
Steel (Zinc plated)	Nut	09

Working Pressure: 400psi.

Working temperature: -29°C ... +66°C

Thread Type: NPT

Standard: EN 331 (MOP5)





AZAR 102

Ball valves for gas (light-weight series)
in accordance with ISIRI4047 & EN331



AZAR 102A

Size	MOP	Weight (g)	Q. in Box
1/2"	5	225	80(8x10)
3/4"	5	335	60(6x10)
1"	5	545	40(4x10)
1 1/4"	5	720	16(4x4)
1 1/2"	5	1050	16(4x4)
2"	5	1600	8(4x2)



AZAR 102C

Size	MOP	Weight (g)	Q. in Box
1/2"	5	195	84(6x14)
3/4"	5	300	60(6x10)

* Aluminum handle



AZAR 102Z

Size	MOP	Weight (g)	Q. in Box
1/2"	5	235	80(8x10)
3/4"	5	345	60(6x10)

* Latched handle

AZAR 103



Eco ball valves for gas , resulting from re-engineering
of the old products
in accordance with ISIRI4047 & EN331



AZAR 103A

Size	MOP	Weight (g)	Q. in Box
1/2"	5	182	72(6x12)
3/4"	5	280	72(6x12)
1"	5	436	48(4x12)





AZAR 104

Eco ball valves for gas with Lockable handle, resulting from re-engineering of the old products in accordance with ISIRI4047 & EN331

Size	MOP	Weight (g)	Q. in Box
1"	5	393	48 (4x12)

* Brass handle



AZAR 104
Lockable



AZAR 114

Ball valves for gas with Lockable handle in accordance with ISIRI4047 & EN331

Size	MOP	Weight (g)	Q. in Box
1"	5	510	36(12x3)
1 1/4"	5	970	16 (8 x 2)
1 1/2"	5	1380	16 (8 x 2)
2"	5	2145	8(4x2)

* Brass handle



AZAR 114
Lockable



AZAR 101 D

Size	MOP	Weight (g)	Q. in Box
2 1/2"	5	3800	2(1x2)
3"	5	6255	2(1x2)
4"	5	11140	1(1x1)

* Aluminum handle



AZAR 101D



AZAR 133

Ball valves for gas with long-stem for built-in installation in accordance with ISIRI4047 & EN331

Size	MOP	Weight (g)	Q. in Box
1"	5	625	36(6x6)



AZAR 133A





AZAR 144

Angled ball cock for gas, size: 1/2 inch with male thread and male/hose connector 10 mm



■ AZAR 144

Size	MOP	Weight (g)	Q. in Box
1/2"	5	102	80(8x10)



AZAR 145

Ball cock for gas, size: 1/2 inch with male thread and male/hose connector 10 mm



■ AZAR 145

Size	MOP	Weight (g)	Q. in Box
1/2"	5	95	72(6x12)







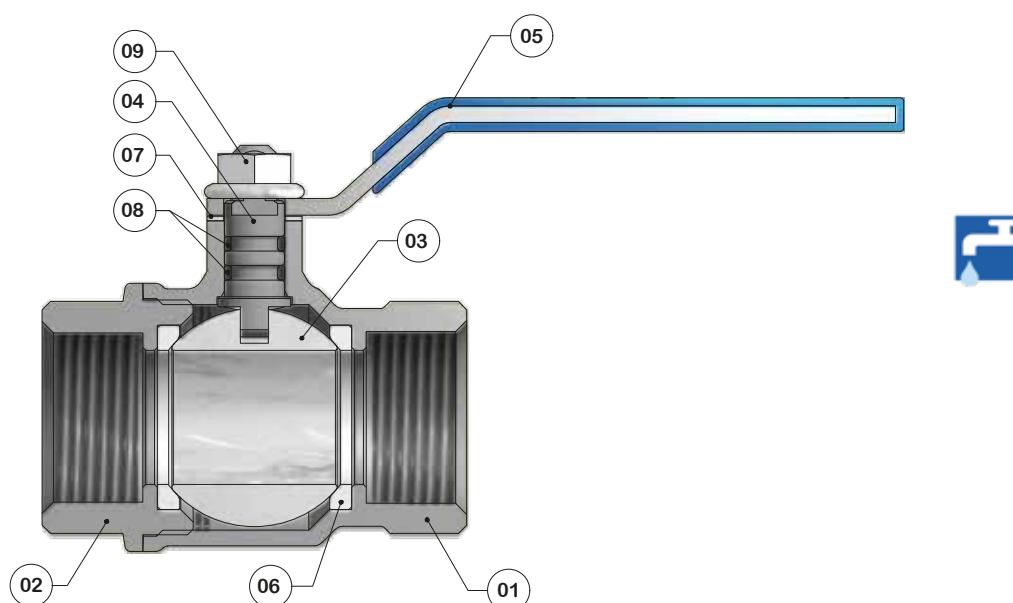
Valves Specific For domestic Water use

*Ball valves specific for domestic water use made of Brass , under the following standards
 - National standard of ISIRI16222 PN25
 - International standard of EN13828 PN25

Application :

- Indoor drinking water distribution systems
- HVAC systems
- Pneumatic systems up to 400 psi

*It is possible to produce these valves without plating(nickle plate coating).



MATERIAL	ITEM	No.
Brass(MS58) (Nickel plated)	Body	01
Brass(MS58) (Nickel plated)	Body Cap	02
Brass(MS60) (Nickel & chrome plated)	Ball	03
Brass(MS60) (Nickel plated)	Stem	04
Steel (Zinc-plated, P.V.C covered)	Handle	05
P.T.F.E	Ball Seat	06
P.E	Thrust Washer	07
E.P.D.M	O-rings	08
Steel (Zinc plated)	Nut	09

Working Pressure: 400psi.

Working temperature: +5°C ... +80°C

Thread Type: BSP (G)

Standard: EN 13828 (PN25)

*If used outdoors, they must be well-protected From Frost.





AZAR 116

Ball valves with female-female connections in accordance with ISIRI16222 & EN13828

Size	DN	Weight (g)	Q. in Box
1/2"	15	195	72(6 x12)
3/4"	20R	280	60(6x10)
1"	25R	565	40(4x10)
1 1/4"	32R	745	16(4 x4)
1 1/2"	40R	1345	16(4 x4)
2"	50R	2125	8(4x2)



■ AZAR 116A

Size	DN	Weight (g)	Q. in Box
1/2"	15	195	60(6x10)
3/4"	20R	280	60(6x10)



■ AZAR 116
Lockable

Size	DN	Weight (g)	Q. in Box
1/2"	15	172	72(6 x12)
3/4"	20R	228	60(6x10)

* Aluminum handle



■ AZAR 116B

Size	DN	Weight (g)	Q. in Box
2 1/2"	65R	3470	2(1x2)
3"	80R	6050	2(1x2)
4"	100R	10900	1(1x1)

* Aluminum handle



■ AZAR 116D



AZAR 114G

Ball valves for water with Lockable handle in accordance with ISIRI16222 & EN13828

Size	DN	Weight (g)	Q. in Box
1"	25 R	510	36(12x3)
1 1/4"	32 R	970	16(8 x 2)
1 1/2"	40 R	1380	16(8 x 2)
2"	50 R	2145	8(4x2)

* Brass handle



■ AZAR 114G
Lockable



CORBI 500



Gate valves are usable in water utilities industry, water supply networks, irrigation systems, petroleum, oil and gasoline networks, tanker manufacturing industries, pneumatic and hydraulic industries, chemical materials and building industries. The gate valve is designed and manufactured according to Iranian National standard No. 3664 and is made of hot forged brass. The main form of ribs is calculated in inches based on EN ISO-228 Standard. Intermolecular distance is reduced as less as possible in production method to increase body resistance in destruction tests, consequently, working pressure resistance rises. For this reason, forging method is selected.

Order No.	Size (inch)	A (inch)	B (mm)	D (mm)	L (mm)	H (mm)	H1 (mm)	SW (mm)	Operating Temperature (C)	Working Pressure (bar)
5001	G 1/2	1/2"	13	55	44	80	95	26	200	16
5002	G 3/4	3/4"	19	55	49	97	115	32	200	16
5003	G 1	1"	25	60	52	103	125	39	200	16
5004	G 1 1/4	1 1/4"	32	64	60	118	146	49	200	16
5005	G 1 1/2	1 1/2"	38	73	62	131	162	55	200	16
5006	G 2	2"	50	90	72	156	194	68	200	16
5007	G 2 1/2	2 1/2"	56	100	85	185	232	85	200	20
5008	G 3	3"	65	115	88	200	255	98	200	20
5030	G 2 1/2	2 1/2"	63.5	100	83	192	239	85	200	20
5031	G 3	3"	76.2	115	98	218	273	98	200	20

Inline Check Foot Valve

CORBI 518



Like a one-way spring valve, it is a valve which the fluid can pass through in one direction and it prevents the return of the flow. This faucet works with fluid pressure and has no other controlling device on its exterior body. The valve opens through the flow pressure which is applied to the surface of the valve and it closes when the flow stops and the spring on the back of the valve applies pressure to it. This product is mainly used in submersible water pumps, well-pumps, urban water supply networks, building heating facilities compressed air systems, and pneumatic in order to prevent tiny particles, dust, and sand from entering highly sensitive systems.

Order No.	Size (inch)	A (inch)	B (mm)	D (mm)	H (mm)	SW (mm)	Working Temperature (C)	Working Pressure (bar)
5180	G 1/2	1/2"	20	35	69	26	100	16
5181	G 3/4	3/4"	23.5	41	82	32	100	16
5182	G 1	1"	30	48	92	39	100	16
5183	G 1 1/4	1 1/4"	36	60	102	49	100	12
5184	G 1 1/2	1 1/2"	44.5	68	115	55	100	12
5185	G 2	2"	56.5	84	134	68	100	12





AZAR 130

Elbow ball valve
in accordance with ISIRI16222 & EN13828

Size	DN	Weight (g)	Q. in Box
3/4"	20R	290	40(20x2)
1"	25R	585	40(20x2)

* Aluminum handle



■ AZAR 130



AZAR 142

Compression elbow ball valve
in accordance with ISIRI16222 & EN13828

Size	DN	Weight (g)	Q. in Box
Φ25x3/4"	20R	335	40(20x2)
Φ25x1"	25R	370	40(20x2)
Φ32x1"	25R	520	40(20x2)

* Aluminum handle



■ AZAR 142



AZAR 128

Single union ball valve (female)
in accordance with ISIRI16222 & EN13828

Size	DN	Weight (g)	Q. in Box
3/4"	20R	325	64(16x4)
1"	25R	615	40(20x2)

* Aluminum handle



■ AZAR 128



AZAR 129

Single union ball valve (male)
in accordance with ISIRI16222 & EN13828

Size	DN	Weight (g)	Q. in Box
3/4"	20R	370	64(16x4)
1"	25R	680	40(20x2)

* Aluminum handle



■ AZAR 129



AZAR 117

Ball valves with female-male connections
in accordance with ISIRI16222 & EN13828



■ AZAR 117A



■ AZAR 117B

Size	DN	Weight (g)	Q. in Box
1/2"	15	215	72(6x12)
3/4"	20R	310	60(6x10)
1"	25R	615	40(4x10)

Size	DN	Weight (g)	Q. in Box
1/2"	15	190	72(6 x12)
3/4"	20R	290	60(6x10)

* Aluminum handle

AZAR 107

Mini ball valves
in accordance with ISIRI16222 & EN13828



■ AZAR 107

Size	DN	Weight (g)	Q. in Box
1/2"	15R	110	96(8x12)
3/4"	20R	165	60(6x12)

* Aluminum handle

AZAR 113

Ball valves with female-male connections
in accordance with ISIRI16222 & EN13828



■ AZAR 113A

Size	DN	Weight (g)	Q. in Box
1/2"	15	175	96(6x16)
3/4"	20R	280	72(6x12)
1"	25R	535	40(4x10)

* Aluminum handle




AZAR 132

Ball valves with male-male connections
in accordance with ISIRI16222 & EN13828

Size	DN	Weight (g)	Q. in Box
1/2"	15	220	72(6x12)



■ AZAR 132A

Size	DN	Weight (g)	Q. in Box
1/2"	15	200	72(6x12)

* Aluminum handle



■ AZAR 132B


AZAR 119

Washing machine ball valve
in accordance with ISIRI16222 & EN13828

Size	DN	Weight (g)	Q. in Box
1/2"	15R	140	96(6x16)

* Aluminum handle



■ AZAR 119D


AZAR 109

Eco Washing machine ball valve, resulting from
re-engineering of the old products
in accordance with ISIRI16222 & EN13828

Size	DN	Weight (g)	Q. in Box
1/2"	15R	120	96(6x16)

* Aluminum handle



■ AZAR 109



AZAR 115

Manifold compression ball valve
in accordance with ISIRI16222 & EN13828



■ AZAR 115

Size	DN	Weight (g)	Q. in Box
Φ 16 x 1/2"	15R	145	80(4x20)
Φ 20 x 1/2"	15R	155	72(4x18)
Φ 20 x 3/4"	20R	210	56(4x14)
Φ 25 x 3/4"	20R	230	72(6x12)

* Aluminum handle

AZAR 127

Compression ball valve
in accordance with ISIRI16222 & EN13828



■ AZAR 127

Size	DN	Weight (g)	Q. in Box
Φ 16 x 16	15R	185	60(6x10)
Φ 20 x 20	15R	215	60(6x10)

* Aluminum handle

AZAR 140

Manifold swivel ball valve
in accordance with ISIRI16222 & EN13828



■ AZAR 140

Size	DN	Weight (g)	Q. in Box
Φ 16 x 1/2"	15R	160	96(12x8)

* Aluminum handle

AZAR 123

Under sink ball valve
in accordance with ISIRI16222 & EN13828



■ AZAR 123

Size	DN	Weight (g)	Q. in Box
1/2" x 1/2"	10R	120	150(75x2)
1/2" x 3/8"	10R	120	150(75x2)

* Aluminum handle



Fire Fighting Valve

CORBI 517


This product is suitable for fire panels with an inlet on their lower section and a 130 degree outlet and which could be attached to the hydrant hose.

Order No.	Size (inch)	D1 (inch)	D2 (inch)	d1 (mm)	d2 (mm)	L (mm)	H (mm)	a (degree)	Operating Temperature (C)	Working Pressure (bar)
5170	G 1 1/2	G 1 1/2"	G 1 1/2"	40	40	96	130	50°	180	16

Swing Check Valve

CORBI 505


A valve through which the fluid passes in one direction and backflow of fluid is avoided. The valve acts only under the pressure of fluid having no controller device on outer body. Fluid circulation is controlled by a disc which gets away from valve body when fluid pressures and returned to its previous position when pressure stops. Swing check valves are used usually in urban water supply, thermal installations of buildings, industrial purposes, pumps, petroleum and oil networks and generally in all networks in which the fluid flows only in one direction. Followings are benefits and advantages of this product:

- Resistance against corrosion and tear
- Resistance against sediments
- Full sealing
- Silent on-off position

Order No.	Size (inch)	A (inch)	B (mm)	L (mm)	H (mm)	H1 (mm)	SW (mm)	Operating Temperature (C)	Max. Working Pressure (bar)
5050	G 1/2	1/2"	13	51	31	45	26	200	16
5051	G 3/4	3/4"	19	57	35	53	32	200	16
5052	G 1	1"	25	67	43	65	39	200	16
5053	G 1 1/4	1 1/4"	32	75	45	73	49	200	16
5054	G 1 1/2	1 1/2"	38	84	49	79	55	200	16
5055	G 2	2"	50	103	57	95	68	200	16
5056	G 2 1/2	2 1/2"	62	128	78	125	85	200	16



AZAR 118



Bib cock ball valve with hose connection
in accordance with ISIRI16222 & EN13828



─ AZAR 118D

Size	DN	Weight (g)	Q. in Box
1/2"	15R	185	72(6x12)

AZAR 125



Bib cock ball valve with threaded connection-
hose connection
in accordance with ISIRI16222 & EN13828



─ AZAR 125C

Size	DN	Weight (g)	Q. in Box
1/2"	15R	215	72(6x12)
3/4"	20R	340	60(6x10)
1"	25R	520	36(6x6)

AZAR 141



Bib cock ball valve with threaded connection-
hose connection-lockable handle
in accordance with ISIRI16222 & EN13828



─ AZAR 141

Size	DN	Weight (g)	Q. in Box
1/2"	15R	220	72(6x12)
3/4"	20R	345	60(6x10)





AZAR 134

Ball valve with Y strainer (female)
in accordance with ISIRI16222 & EN13828

Size	DN	Weight (g)	Q. in Box
1/2"	15	225	72(6x12)
3/4"	20R	345	60(6x10)

* Aluminum handle



■ AZAR 134



AZAR 135

Ball valve with Y strainer (female-male)
in accordance with ISIRI16222 & EN13828

Size	DN	Weight (g)	Q. in Box
1/2"	15	245	72(6x12)
3/4"	20R	385	60(6x10)

* Aluminum handle



■ AZAR 135



AZAR 143

Y strainer

Size	DN	Weight (g)	Q. in Box
1/2"	15	125	72(6x12)
3/4"	20	240	60(6x10)
1"	25	395	48(6x8)
1 1/4"	32	612	24(6x4)
1 1/2"	40	782	24(6x4)
2"	50	1268	12(6x2)
2 1/2"	65	2136	8(4x2)



■ AZAR 143



AZAR 105



Check valve
producible with Plastic & Brass valvate
in accordance with ISIRI3664 & BS5154



■ AZAR 105

Size	DN	Weight (g)	Q. in Box
1/2"	15	145	72(6x12)
3/4"	20	205	72(6x12)
1"	25	300	54(6x9)
1 1/4"	32	470	16(4x4)
1 1/2"	40	620	12(2x6)
2"	50	920	8(2x4)
2 1/2"	65	1602	8(4x2)
3"	80	2329	8(4x2)

AZAR 138



Back-water radiator valve
in accordance with ISIRI18732 & BS2767



■ AZAR 138B

Size	DN	Weight (g)	Q. in Box
1/2"	15	175	60(6x10)

AZAR 139



Manual control radiator ball valve
in accordance with ISIRI16222 & EN13828



■ AZAR 139B

Size	DN	Weight (g)	Q. in Box
1/2"	15R	250	60(6x10)



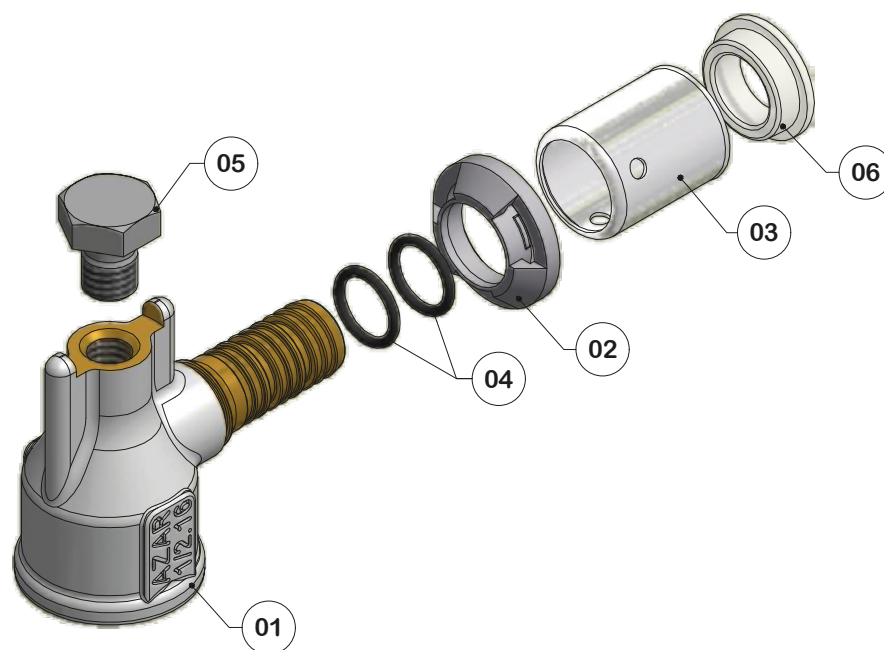


Press Fittings

Fittings specific for Five-Layer pipes made of Brass in accordance with ISIRI12753-3(PN10) & ISO1167-3(Class PN10)

Application :

- Drinking water
- Mechanical facilities of the building
- Heating and Cooling systems and Air Conditioning
- Toilets
- Pneumatic systems



MATERIAL	ITEM	No.
Brass (MS58)	Body	01
POM	Ring Holder	02
Stainless Steel (304 -L)	Ring	03
E.P.D.M	Oring	04
Steel (Zinc -plated)	Screw	05
PVC	Holder	06

Working Pressure 400psi.

Working temperature: +5°C ... +80°C

Thread Type: BSP (G)

Standard: ISO11673 (PN10)





Female wall Elbow

Code No.	Size	PN	Q. in Box
11711	ø 16 x 1/2"	10	160(8x20)
11712	ø 20 x 1/2"	10	112(8x14)
11713	ø 25 x 3/4"	10	64(8x8)
11714	ø 32 x 1"	10	64(8x5)



Female wall tee 90°

Code No.	Size	PN	Q. in Box
11811	ø 16 x 1/2" x ø 16	10	80(8x10)
11812	ø 20 x 1/2" x ø 20	10	64(8x8)
11813	ø 16 x 1/2" x ø 20	10	64(8x8)
11814	ø 20 x 1/2" x ø 16	10	64(8x8)



Female Elbow

Code No.	Size	PN	Q. in Box
12111	ø 16 x 1/2"	10	160(8x20)
12113	ø 20 x 3/4"	10	80(8x10)
12114	ø 25 x 3/4"	10	64(8x8)
12115	ø 32 x 1"	10	32(8x4)
12116	ø 25 x 1"	10	64(8x8)



Male Elbow

Code No.	Size	PN	Q. in Box
12211	ø 16 x 1/2"	10	160(8x20)
12213	ø 20 x 3/4"	10	80(8x10)
12214	ø 25 x 3/4"	10	64(8x8)
12215	ø 32 x 1"	10	32(8x4)
12216	ø 25 x 1"	10	64(8x8)



Tee Fitting

Code No.	Size	PN	Q. in Box
11511	ø 16 x ø 16 x ø 16	10	128(8x16)
11512	ø 20 x ø 20 x ø 20	10	80(8x10)
11513	ø 25 x ø 25 x ø 25	10	32(8x4)
11514	ø 32 x ø 32 x ø 32	10	32(8x4)



Elbow 90°

Code No.	Size	PN	Q. in Box
12311	ø 16 x ø 16	10	192(8x24)
12312	ø 20 x ø 20	10	112(8x14)
12313	ø 25 x ø 25	10	64(8x8)
12314	ø 32 x ø 32	10	32(8x4)





Straight Fitting

Code No.	Size	PN	Q. in Box
11111	ø16 x ø16	10	240(8x30)
11112	ø 20 x ø20	10	160(8x20)
11113	ø 25 x ø25	10	64(8x8)
11114	ø 32 x ø32	10	64(8x8)



Reducing Straight Fitting

Code No.	Size	PN	Q. in Box
11211	ø 20 x ø16	10	192(8x24)
11212	ø 25 x ø16	10	128(8x16)
11213	ø 25 x ø20	10	96(8x12)
11214	ø 32 x ø16	10	80(8x10)
11215	ø 32 x ø20	10	64(8x8)
11216	ø 32 x ø25	10	64(8x8)



Male Straight Fitting

Code No.	Size	PN	Q. in Box
11311	ø16 x 1/2"	10	240(8x30)
11312	ø16 x 3/4"	10	160(8x20)
11313	ø20 x 1/2"	10	192(8x24)
11314	ø20 x 3/4"	10	128(8x16)
11315	ø25 x 1/2"	10	96(8x12)
11316	ø25 x 3/4"	10	96(8x12)
11317	ø25 x 1"	10	80(8x10)
11318	ø32 x 1"	10	80(8x10)



Female Straight Fitting

Code No.	Size	PN	Q. in Box
11411	ø16 x 1/2"	10	240(8x30)
11412	ø16 x 3/4"	10	160(8x20)
11413	ø20 x 1/2"	10	208(8x26)
11414	ø20 x 3/4"	10	128(8x16)
11415	ø25 x 3/4"	10	96(8x12)
11416	ø25 x 1"	10	80(8x10)
11417	ø32 x 1"	10	48(8x6)



Swivel Female Adapter

Code No.	Size	PN	Q. in Box
12814	ø25 x 3/4"	10	64(8x8)



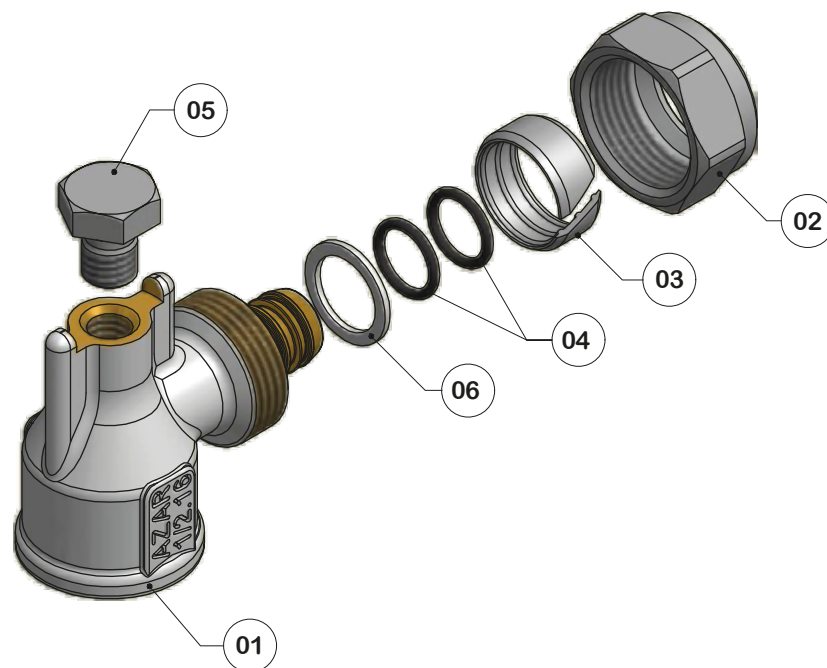


Compression Fittings

Fittings specific for Five-Layer pipes made of Brass in accordance with ISIRI12753-3(PN10) & ISO1167-3(Class PN10)

Application :

- Drinking water
- Mechanical facilities of the building
- Heating and Cooling systems and Air Conditioning
- Toilets
- Pneumatic systems



MATERIAL	ITEM	No.
Brass (MS58)	Body	01
Brass (MS60)	Nut	02
Brass (MS60)	Ring	03
E.P.D.M	O-ring	04
Steel (Zinc-plated)	Screw	05
P.E	Washer	06

Working Pressure: 400psi.

Working temperature: +5°C ... +80°C

Thread Type: BSP (G)

Standard: ISO1167 - 3 (PN10)





Compression Female
wall Elbow

Code No.	Size	PN	Q. in Box
21711	ø 16 x ½"	10	56(4x14)
21712	ø 20 x ½"	10	40(4x10)
21713	ø 25 x ¾"	10	32(4x8)



Compression wall tee 90°

Code No.	Size	PN	Q. in Box
21811	ø 16 x ½" x ø 16	10	32(4x8)
21812	ø 20 x ½" x ø 20	10	32(4x8)
21813	ø 16 x ½" x ø 20	10	24(4x6)
21814	ø 20 x ½" x ø 16	10	24(4x6)



Compression Male Elbow

Code No.	Size	PN	Q. in Box
22111	ø 16 x ½"	10	80(4x20)
22113	ø 20 x ¾"	10	40(4x10)
22114	ø 25 x ¾"	10	32(4x8)
22115	ø 32 x 1"	10	16(4x4)
22116	ø 25 x 1"	10	32(4x8)



Compression Femal Elbow

Code No.	Size	PN	Q. in Box
22211	ø 16 x ½"	10	56(4x14)
22213	ø 20 x ¾"	10	48(4x12)
22214	ø 25 x ¾"	10	40(4x10)
22215	ø 32 x 1"	10	24(4x6)
22216	ø 25 x 1"	10	32(4x8)



Compression Tee

Code No.	Size	PN	Q. in Box
21511	ø 16 x ø 16 x ø 16	10	48(4x12)
21512	ø 20 x ø 20 x ø 20	10	32(4x8)
21513	ø 25 x ø 25 x ø 25	10	16(4x4)
21514	ø 32 x ø 32 x ø 32	10	16(4x4)



Compression Elbow

Code No.	Size	PN	Q. in Box
22311	ø 16 x ø 16	10	80(4x20)
22312	ø 20 x ø 20	10	56(4x14)
22313	ø 25 x ø 25	10	32(4x8)
22314	ø 32 x ø 32	10	16(4x4)





Compression Straight
Fitting

Code No.	Size	PN	Q. in Box
21111	ø 16 x ø 16	10	120(4x30)
21112	ø 20 x ø 20	10	80(4x20)
21113	ø 25 x ø 25	10	32(4x8)
21114	ø 32 x ø 32	10	24(4x6)



Compression Reducing
Straight Fitting

Code No.	Size	PN	Q. in Box
21211	ø 20 x ø 16	10	80(4x20)
21212	ø 25 x ø 16	10	64(4x16)
21213	ø 25 x ø 20	10	48(4x12)
21214	ø 32 x ø 16	10	24(4x6)
21215	ø 32 x ø 20	10	32(4x8)
21216	ø 32 x ø 25	10	32(4x8)



Compression Male
Straight Fitting

Code No.	Size	PN	Q. in Box
21311	ø 16 x 1/2"	10	120(4x30)
21312	ø 16 x 3/4"	10	96(4x24)
21313	ø 20 x 1/2"	10	80(4x20)
21314	ø 20 x 3/4"	10	80(4x20)
21315	ø 25 x 1/2"	10	80(4x20)
21316	ø 25 x 3/4"	10	56(4x14)
21317	ø 25 x 1"	10	40(4x10)
21318	ø 32 x 1"	10	32(4x8)



Compression Female
Straight Fitting

Code No.	Size	PN	Q. in Box
21411	ø 16 x 1/2"	10	80(4x20)
21412	ø 16 x 3/4"	10	72(4x18)
21413	ø 20 x 1/2"	10	80(4x20)
21414	ø 20 x 3/4"	10	64(4x16)
21415	ø 25 x 3/4"	10	56(4x14)
21416	ø 25 x 1"	10	40(4x10)
21417	ø 32 x 1"	10	32(4x8)



Manifold

Code No.	Manifold (AxB)	Way	PN	Q. in Pack
AZAR 203	G 3/4" x 1/2"	2...4	10	10
	G 1" x 1/2"	2...10	10	10
	G 1 1/4" x 1/2"	5...8	10	10

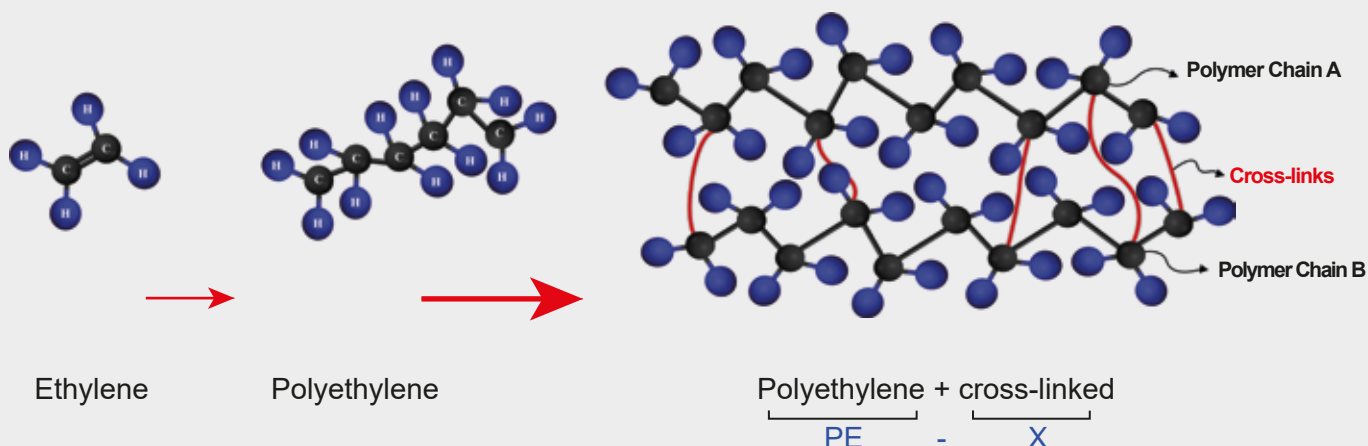




5 Layers Pipes PEX-AL-PEX

One of the most popular polymers in multi-layer pipe manufacturing is poly-ethylene. This is a synthetic chemical made of ethylene which has many brilliant features such as resistance against acid and base resistance. But in spite of having these properties, PE's shortcoming is its low resistance against heat. To increase the heat resistance property PE goes under cross-linking process to change to PEX, a kind of PE that benefits from a lot more applications compared to PE, but more expensive and costly. This higher price causes some manufacturer of multi-layer pipes to substitute some low grade polymers that highly reduces the quality of their products. Contrary to this unfair trend, Azaran has always kept to the best quality PEX material to guarantee the quality of its 5-layer pipes regarding the maximum level of customers' right and satisfaction.

Due to the high quality of the raw material the PEX-AL-PEX pipes manufactured in Azaran have kept all the standard properties of PEX polyethylene to the highest possible degree increasing, for example, bending properties, resistance against freezin cold, hit and burst resistance, etc.



Pipe Technical Specification

Pipe size (outer diameter-mm)	16	20	25	32
Inner diameter (mm)	12	16	20	26
Length coil (m)	200	150	100	80
Weight per meter of pipe (g/m)	105	157	216	330
Weight per coil (kg)	21	23/5	21/5	26/5
Water volume (l/m)	0/113	0/201	0/314	0/510
Minimum bend radius by hand (mm)	80	100	126	161
Minimum bend radius with spring (mm)	65	83	102	129
Minimum bend radius with bending tool (mm)	57	76	95	130
Roughness (mm)	0/007			
Thermal conductivity (W/mk)	0/40			
Coefficient of expansion (mm/mk)	0/025			
Operating pressure in long term (bar)	10			
Operating temperature in long term (°C)	95°C			
Tolerance	±2%			



AZAR 204



1/2.10 mm



1/2.15 mm



1/2.20 mm



1/2.30 mm



1/2.40 mm



1/2.50 mm

Size	Weight (g)	Q. in Box
G 1/2" - 10	32	24
G 1/2" - 15	41	24
G 1/2" - 20	45	24
G 1/2" - 30	56	24
G 1/2" - 40	66	24
G 1/2" - 50	46	24

AZAR 146

Brass 5-Way Connector for Water Pump , size: 1
with male and female thread for pressure gauge
and pressure switch



Size	Length (mm)	Weight (g)
G 1"	76	225



AZARAN TRADING L.L.C
◀ Dubai-UAE ▶

Office: Nakheel Road, Deire, Dubai, U.A.E
Warehouse No. 2 , Alley No. 79, Rd. No. 1, Umm Al ramoul, Dubai, U.A.E

+ 971 52 92 44 836
+ 971 43 96 22 55

www.azaran.ae
sales@azaran.ae