



BIOPTZ

Designed in Canada







#1320, Ashlar



#1340, Brick





#1360, #1361, Quarter-turn

C BIOPZ



#1310



#1312



#1315



#1320



#1330



#1340



#1360

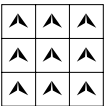


#1361

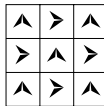
Specifications

Construction:	Multi-level loop
Fiber:	100% Nylon
Dye Method:	Solution dyed
Gauge:	1/12 "
Stitches:	13 per inch
Pile Weight:	20 OZ/yd2(680gms/m2)
Pile Height:	4mm+/-0.5mm
Total Thickness:	6.5mm+/-0.5mm
Backing:	Polyolefin-Bac
Tile Size:	50cm*50cm

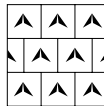
Installation Method



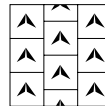
Monolithic



Quarter-turn



Brick



Ashlar

Performance

Flammability:	Passes (ASTM E648 / FF 1-70 (8/8))
Smoke Density:	Passes (ASTM E662)
Static Propensity:	≤3.0kV (AATCC 134)
Stain Protection:	Excellent Stain Resistance
Color Fastness to Light:	5 (AATCC-16E)
Color Fastness to Crocking:	5 (AATCC-165)
Color Fastness to Ozone:	5 (AATCC-129)
Dimensional Stability:	<0.2% (AACHEN)
Dynamic Crush:	Negligible Impact or no change
Delamination Strength:	Excellent (No Separation)

Warranties

- 10 years limited warranty:
- No more than 10% face yarn loss by weight under normal use
- Limited static warranty.
- Limited delamination warranty under normal use.





cfloors
The Flooring Solutions

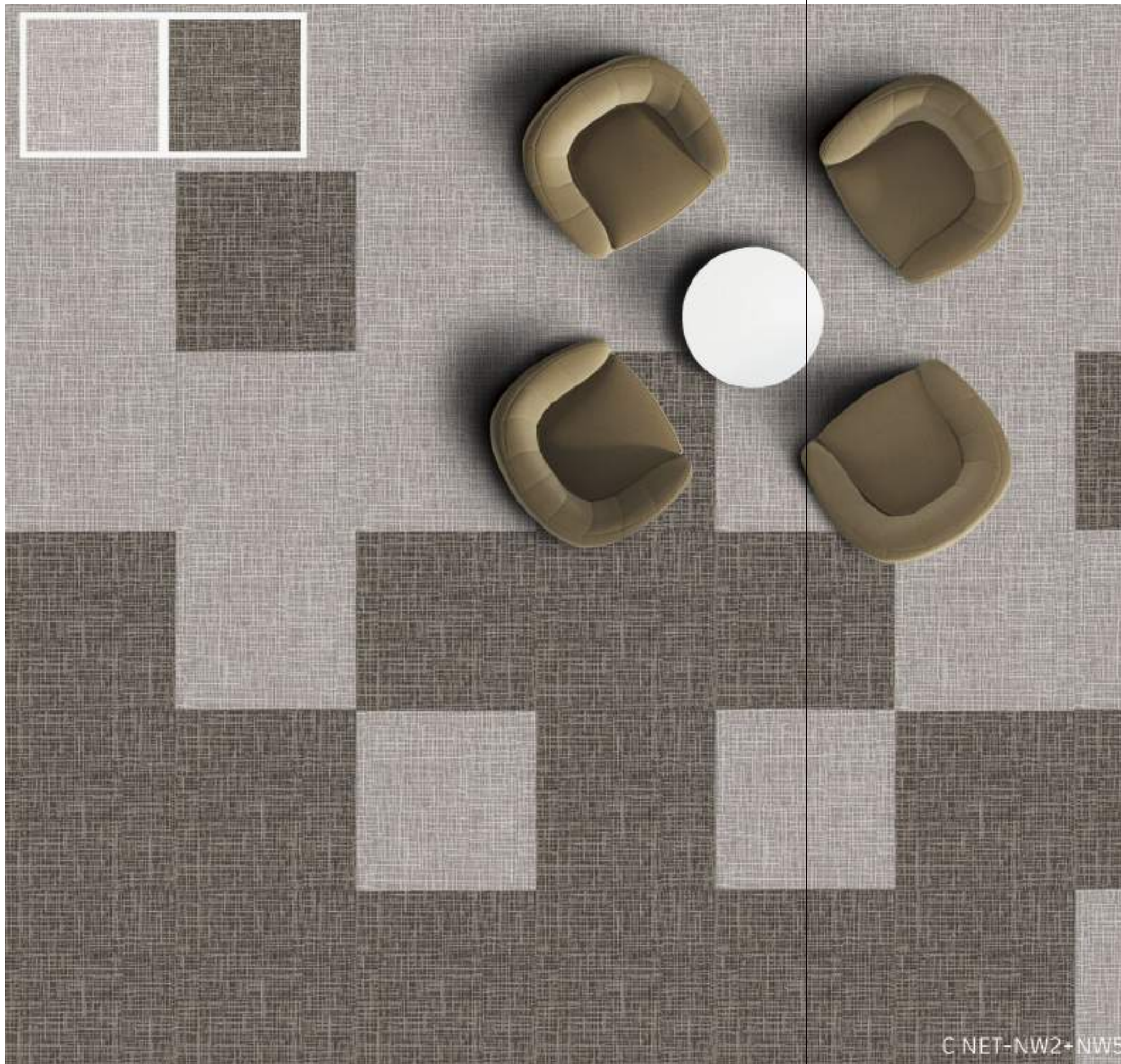


NET





C NET-NW7+NW8





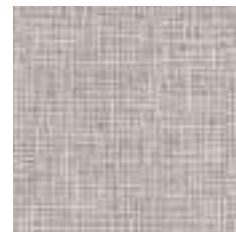
C-NET-NW8+NW10+NW11



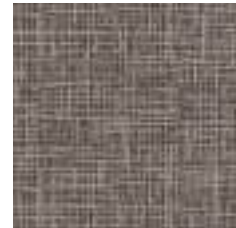




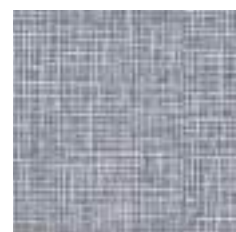




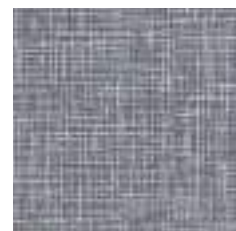
C NET NW 02 1



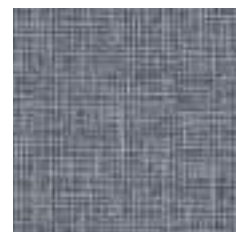
C NET NW 05 1



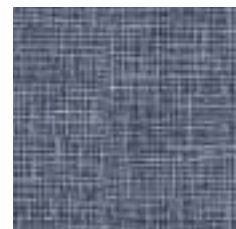
C NET NW 07 1



C NET NW 08 1



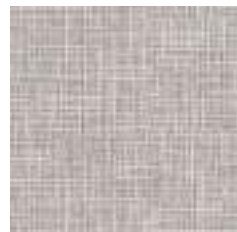
C NET NW 09 1



C NET NW 10 1



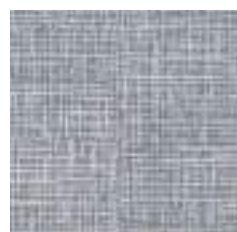
C NET NW 11 1



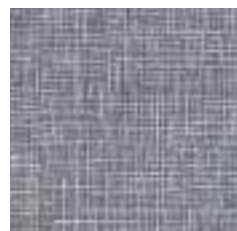
C NET NW 02 2



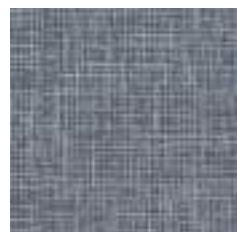
C NET NW 05 2



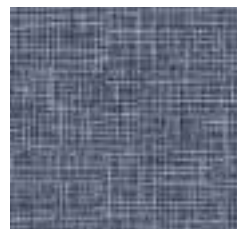
C NET NW 07 2



C NET NW 08 2



C NET NW 09 2



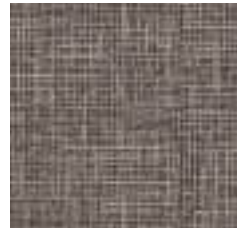
C NET NW 10 2



C NET NW 11 2



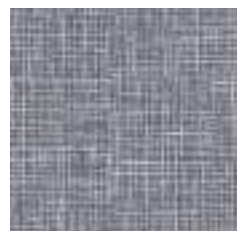
C NET NW 02 3



C NET NW 05 3



C NET NW 07 3



C NET NW 08 3



C NET NW 09 3



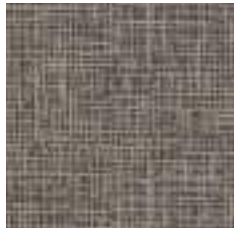
C NET NW 10 3



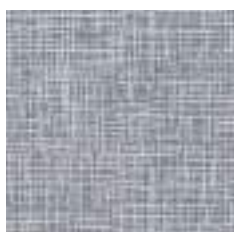
C NET NW 11 3



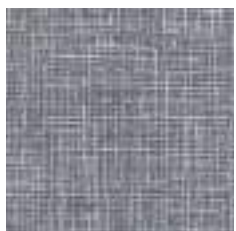
C NET NW 02 4



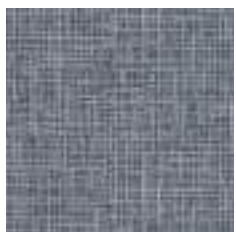
C NET NW 05 4



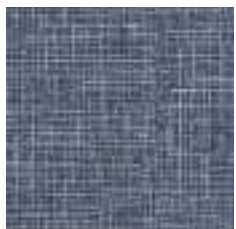
C NET NW 07 4



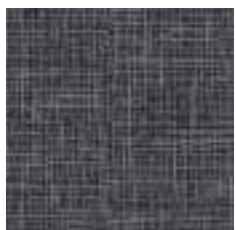
C NET NW 08 4



C NET NW 09 4



C NET NW 10 4



C NET NW 11 4

C-NET



Specifications

Construction:	Tufted patterned loop
Fiber:	100% Nylon6
Dye Method:	Digital Chromojet Dyed
Gauge:	1/12
Pile Weight:	22oz/yd ² (750g/m ²)
Pile Height:	4±0.5mm
Total thickness:	7.5±0.5mm
Backing:	FPE Medium backing
Tile Size:	61*61cm

Performance

Radiant Panel:	ASTM E648
Smoke Density:	ASTM E662
Dimensional Stability:	AACHEN
Delamination:	ASTM D3936
Tuft Bind:	ASTM D1335
Hexapod Drum Tester:	ASTM D5252
Colourfastness to Light:	AATCC 16E
Colourfastness to Crocking:	AATCC 165
Colourfastness to Water:	AATCC 107
Accelerated Soiling:	ASTM D6540
Electrostatic:	AATCC 134
Pill Test:	ASTM D2859
Stain Resistance:	AATCC 175
Fire Test:	EN 13501-1
Castor Chair:	EN985
Sound Absorption:	ISO 354
Impact of Sound Reduction:	ISO 10140

Installation Method

Monolithic	Brick	Quarter-turn

Warranties

10 years limited warranty.
 No more than 10% face yarn loss by weight under normal use
 Limited static warranty
 Limited delamination warranty under normal use.





cflors
The Flooring Solutions



WEST

PATTERNS

25cmx100cm, 50cmx50cm, 60cmx60cm
In stock-25x100cm

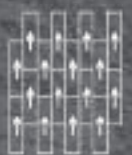
INDEX	PAGE
C-Mesh 224003-Ashlar	2
C-Mesh 224012-Ashlar	3
C-Mesh 224001-02-04-Ashlar	4
C-Mesh 224001-02-Ashlar	5
C-Mesh 224022-Herringbone	6
C-Mesh 224001-02-03-04-Herringbone	7
Specification	9



C-MESH 224003 Ashlar









C-MESH 224022 Herringbone



C-MESH 224001-02-03-04 Herringbone



S C-MESH 224002



S C-MESH 224001



C-MESH 224021



S C-MESH 224011



S C-MESH 224022



S C-MESH 224012



C-MESH 224003



C-MESH 224004



S C-MESH 224005

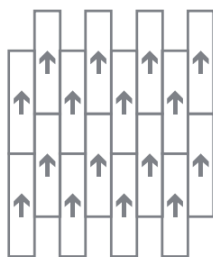
* S = Stock

Specification

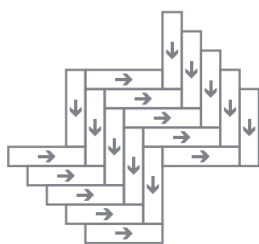
Product Name	C-MESH 224
Product Code	C-MESH 224
Tufted construction	Multi-Level loop
Fiber	100% Nylon
Dye method	Solution Dyed
Gauge	1/12
Tufted weight(g/m ²)	550±5%
Tile size(mm)	250x1000.500x500.600x600
Pile height(mm)	4.0 ±0.5
Total thickness(mm)	6.5 ± 0.5
Standard Backing	Glass fiber reinforced PVC
Flammability	GB8624-2012 B1(C)
Area of Use	Commercial- Heavy Duty
Antistatic performance	ISO 6356:2012≤2.0 kV
Dimensional Stability	QB/T 2755-2005≤0.2%
Colour Fastness	QB/T 2755-2005 ≥4-5
Green Carpet(VOC)	CRI Green Label GLP100230



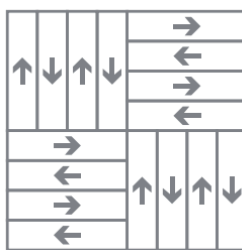
Recommended installation methods



Ashlar



Herringbone



Basketweave

Edmonton



The Flooring Solutions

your color story

PATTERNS

50cm x 50cm

INDEX

PAGE

Edmonton 01	2
Edmonton 04	3
Edmonton 06	4
Edmonton 07	5
Colour	6
Specification	7



Edmonton 01 Quarter-turn



Edmonton 04 Brick



Edmonton 06 Quarter-turn



Edmonton 07 Brick

Edmonton 04



Edmonton 01



Edmonton 07



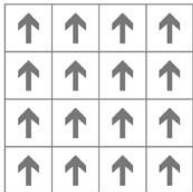
Edmonton 06

Specifications

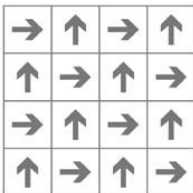
Construction:	multi-level loop
Fiber:	100% Invista Nylon 6
Dye Method:	solution dyed
Gauge:	1/12"
Stitches:	10 per inch
Pile Weight:	17 OZ/yd ² (580 gms/m ²)
Pile Height:	3.5mm ± 0.5mm
Total Thickness:	6mm ± 0.5mm
Backing:	PVC with fiberglass
Tile Size:	50cm x 50cm

Performance

Flammability:	Passes (ASTM E648 / FF 1-70 (8/8))
Smoke Density:	Passes (ASTM E662)
Static Propensity:	≤ 3.0 kV (AATCC 134)
Soil & Stain Protection:	Excellent Soil Resistance
Colour Fastness to Light:	5 (AATCC- 16E)
Colour Fastness to Crocking:	5 (AATCC- 16S)
Colour Fastness to Ozone:	5 (AATCC- 12S)
Dimensional Stability:	<0.2% (AACHEN)
Dynamic Crush:	Negligible impact or no change
Delamination Strength:	Excellent (No Separation)



Monolithic



Quarter-Turn



Anti-fouling



Anti-static



Environmental



Passed various tests



Fashion colors



100% B,C,F Yarn



Reduced Flammability



Isolation acoustic



Colorfast



Chair roulettes



No edge ravel



Wear resistance



Soil Resistance



Wear Warranties



Dimensional Stability



Long Life-span



Easy to transport



Non-mold



FALLFAX

Designed in Canada



SHX #5, Ashlar



SHX #4, SHX #5, Ashlar





SHX #6, Ashlar



SHX #2, Ashlar



SHX #1, Ashlar

HALIFAX



SHX #1



SHX #2



SHX #3



SHX #4



SHX #5



SHX #6

Specifications

Construction:	Multi-level loop
Fiber:	Nylon 6
Dye Method:	Solution dyed
Gauge:	1/12 "
Stitches:	11 per inch
Pile Weight:	20 OZ/yd2(680gms/m2)
Pile Height:	4mm+/-0.5mm
Total Thickness:	6.5mm+/-0.5mm
Backing:	EcoAce-Bac
Tile Size:	25cm*100cm

Installation Method



Ashlar



Herringbone

Performance

Flammability:	Passes (ASTM E648 / FF 1-70 (8/8))
Smoke Density:	Passes (ASTM E662)
Static Propensity:	≤3.0kV (AATCC 134)
Soil & Stain Proteccion:	Excellent Soil Resistance
Color Fastness to Light:	5 (AATCC-16E)
Color Fastness to Crocking:	5 (AATCC-165)
Color Fastness to Ozone:	5 (AATCC-129)
Dimensional Stability:	<0.2% (AACHEN)
Dynamic Crush:	Negligible Impact or no change
Delamination Strength:	Excellent (No Separation)

Warranties

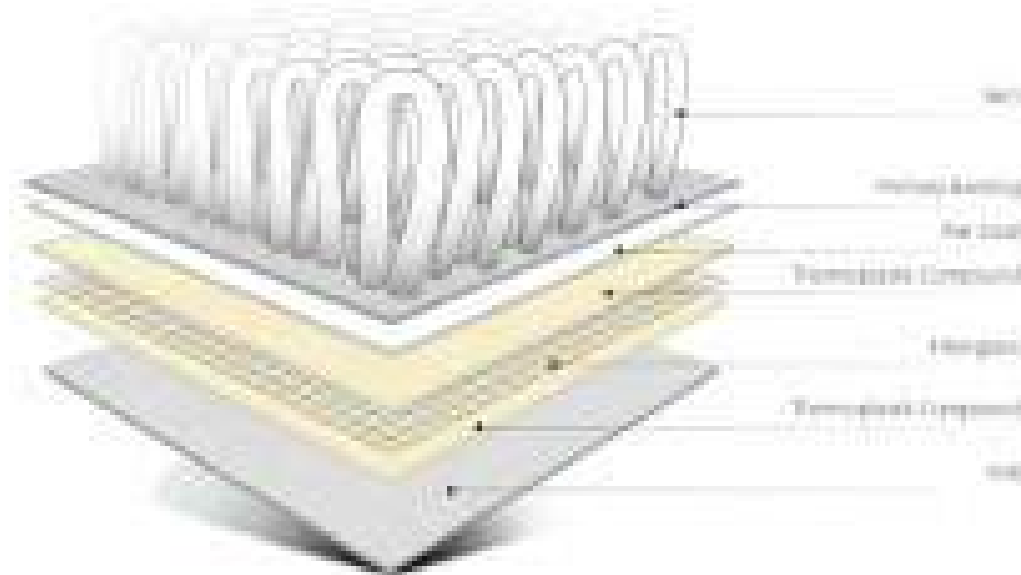
- 10 years limited warranty:
- No more than 10% face yarn loss by weight under normal use
- Limited static warranty.
- Limited delamination warranty under normal use.



EcoAce-Bar® Carpet Tile Backing

EcoAce-Bar® is a uniquely developed carpet tile backing using a special polyurethane layer to adhere high quality cushion backing to the carpet.

EcoAce-Bar® brings superior sustainability and performance to products.



Comfort Enhancement

- Low VOC emissions
- Durable
- Reduces foot fatigue
- Sound absorption, when used in conjunction with other materials to enhance indoor acoustic environment

Performance Enhancement

- Provides dimensional stability
- Easy installation with fastener
- Flame retardant, ASTM E 648 Class 1, Q885.04-2012 (F100)
- Static Properties, AATCC-134-2004M (ASTM D4044-2008)

Next Generation Sustainable Backing Choice

- PVC FREE, ISOCYANATE FREE, BOP FREE, DINP FREE AND DEHP FREE
- Made of 100% recycled plastic bottles (PET) for the lower carbon footprint
- 20-25% lighter than traditional carpet tile backing equals a significant energy saving in transportation, and a reduction in overall building construction load
- Help contribute to LEED v4 / Living Building Challenge / WELL Building Standard



Side View



Top View

Available in:

- Squares: 30 x 30 cm / 30 x 30 cm
- Planks: 100 x 25 cm / 100 x 30 cm
- Shapes: Triangle / Rightangle / Hexagon / Superdoid / Hexagon

Featured with:





The Flooring Solutions

your color story

PATTERNS

50cm x 50cm

INDEX

PAGE

Svx 1517	2
Vx1519	3
Svx6065, Vx1814, Vx1515, Svn3078	4
SVX1510	5
SVX1756	6
SVX3157	7
Color	8
Color	9
Color	10
Specification	11



SVX1517



Vx1519



SVX6065, Vx1814, Vx1515, SVN3078



SVX1510



SVX1756



SVX3157







SVN3078



VN3079



VN5011



SVX1508



SVX1510



VX1511



SVX1516



SVX1517



VX1519



SVN6065



SVX3158



SVX3157



VX1513



SVX1514



VX1515



SVX1756



VX1814



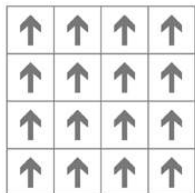
VX1815

Specifications

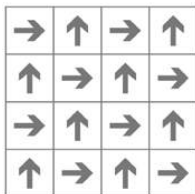
Construction	level loop
Fiber	100% Nylon 6
Dye Method	Solution Dyed
Gauge	1/10"
Stitches	15per inch
Pile Weight	16oz/yd ² (550gms/m ²)
Pile Height	3.5mm±0.5mm
Total thickness	6.5mm±0.5mm
Backing	PVC with fiberglass
Tile Size	50cm x 50cm

Performance

Flooring Radiant Panel:	ASTME 648-04
Dimentional Stability:	ASTMD 7570
Smoke Density:	ASTME 662
Electrostatic Propensity:	AATCC 134
Tuft Bind of Pile:	ASTM D 1335
Accelerated Soiling of Pile Yarn:	ASTM D 6540
Colorfastness to Light:	AATCC 16
Colorfastness to Sea Water:	AATCC 106
Colorfastness to Crocking:	AATCC 165
Stain resistance:	AATCC 175
Losse laid hot metal nut test:	BS 4790
Static load limit:	BS 4939/ ISO 3416
Edge Ravel resistance:	ASTMD 7267
Cleaning:	AATCC 138



Monolithic



Quarter-Turn



Anti-fouling



Anti-static



Environmental



Passed various tests



Fashion colors



100% B.C.F Yarn



Reduced Flammability



Isolation acoustic



Colorfast



Chair roulettes



No edge ravel



Wear resistance



Soil Resistance



Wear Warranties



Dimensional Stability



Long life-span



Easy to transport



Non-mold

WHITEHORSE



PATTERNS

50cm x 50cm

INDEX	PAGE
WHITEHORSE - #2	2
WHITEHORSE - #3 & 4	3
WHITEHORSE - #7	4
WHITEHORSE - #8	5
WHITEHORSE - #9	6
WHITEHORSE - #11	7
Specification	9



SWH #2, Quarter-turn



WH #3 #4, Monolithic



SWH #7, Monolithic

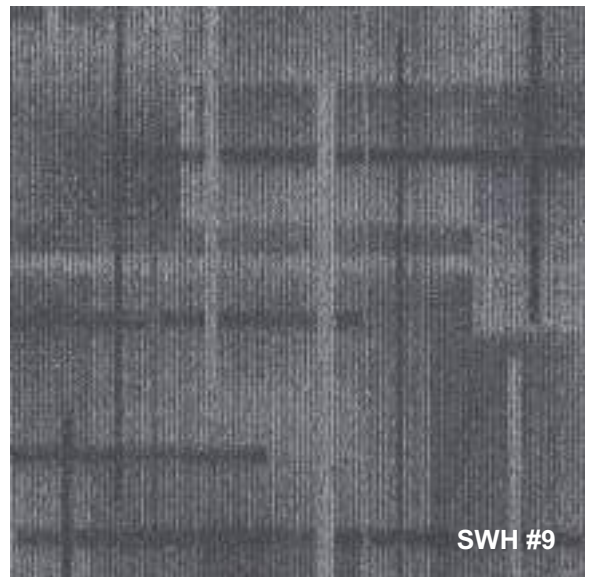
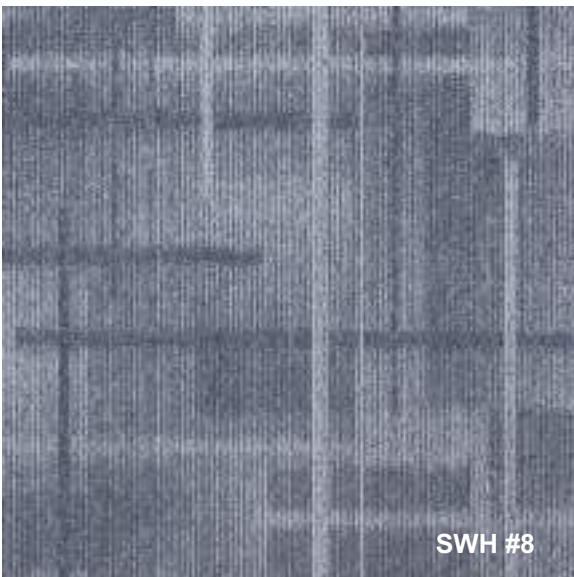
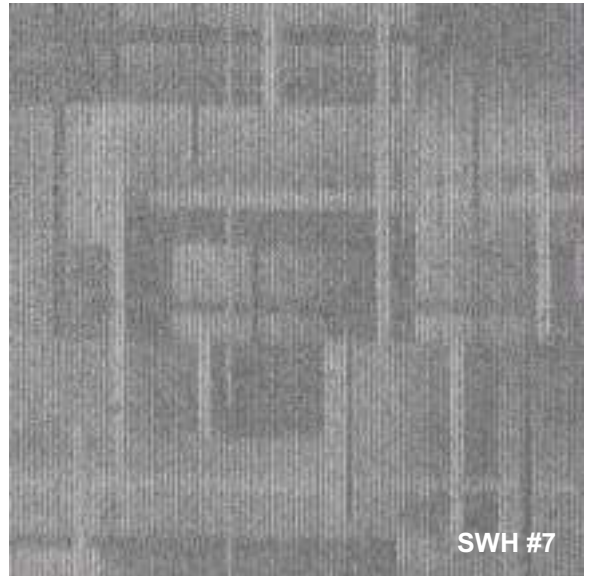
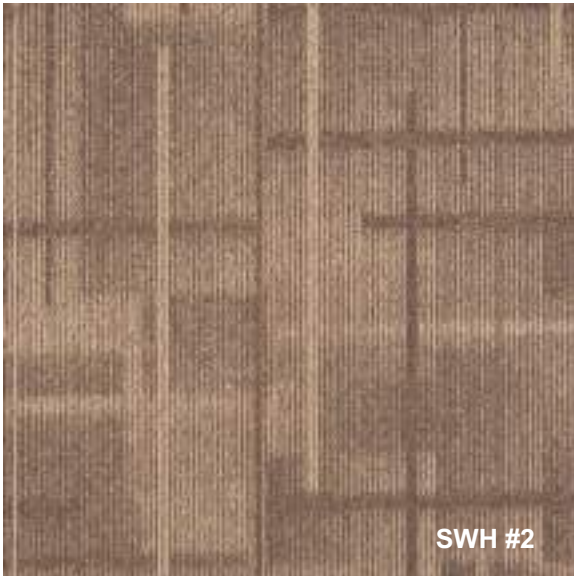




SWH #9, Monolithic



WH #11, Monolithic



WHITEHORSE

Specification

Construction	Multi-level loop
Fiber	Universal Nylon 66
Dye Method	Solution dyed
Gauge	1/12"
Stitches	10 per inch
Pile Weight	20 OZ/yd ² (680 gms/m ²)
Pile Height	4mm± 0.5mm
Total Thickness	10mm± 0.5mm
Backing	Mix-bac
Tile Size	50cm X 50cm

Performance

Flammability:	Passes {ASTM E648 / FF 1-70 (8/8)}
Smoke Density:	Passes (ASTM E662)
Static Propensity:	≤3.0kV (AATCC 134)
Soil & Stain Protection:	Excellent Soil Resistance
Color Fastness to Light:	5 (AATCC-16E)
Color Fastness to Crocking:	5 (AATCC-165)
Color Fastness to Ozone:	5 (AATCC-129)
Dimensional Stability:	<0.2% (AACHEN)
Dynamic Crush:	Negligible Impact or no Change
Delamination Strength:	Excellent (No Separation)

Performance

10 years limited warranty:

No more than 10% face yarn loss by weight under normal use

Limited static warranty.

Limited delamination warranty under normal use.

