

GRACE

New top hung system

- “Profile-to-profile” sliding system
- Mounting: wall/ceiling
- Sequential-synchronous opening / Synchronous opening
- Ultra-thin profile 12mm

COLOUR: black matt

DIMENSIONS

- Max height 3200 mm
- Width 500-1200 mm
- Max weight 60 kg

FILLING

sheet materials T = 4, 8, 10 mm



Profile

Durable vertical profile made of primary aluminium (lintel thickness - 2.5 mm, walls - 1.3 mm)

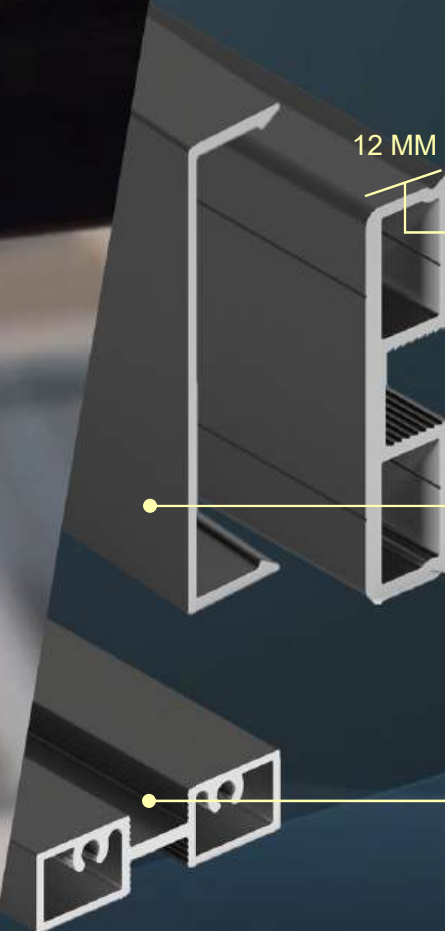
Visible profile width - 12 mm, which is less than most analogues. Obviously, this is the minimum possible profile width in such systems

The exception is that the top rail with a height of 26 mm (carries the entire load of the structure) is hidden behind the decorative cover of the track. Visible part - 12 mm

Vertical profile cover completely hides all technological holes

Dividing rail – 12 mm with low gasket

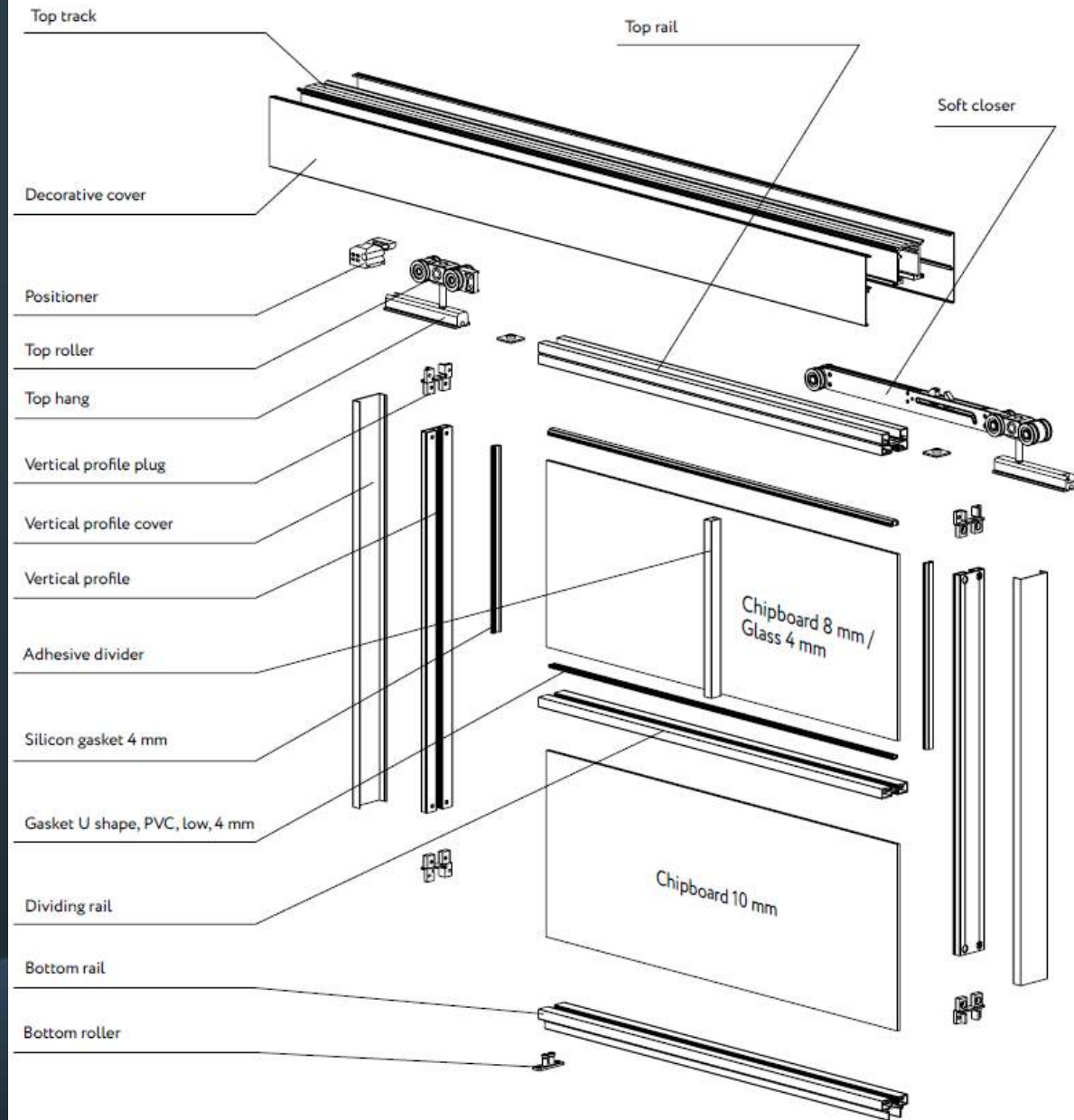
IT IS NOT RECOMMENDED TO INSTALL A VERTICAL DIVIDER DUE TO THE SMALL GROOVE DEPTH OF 5 MM

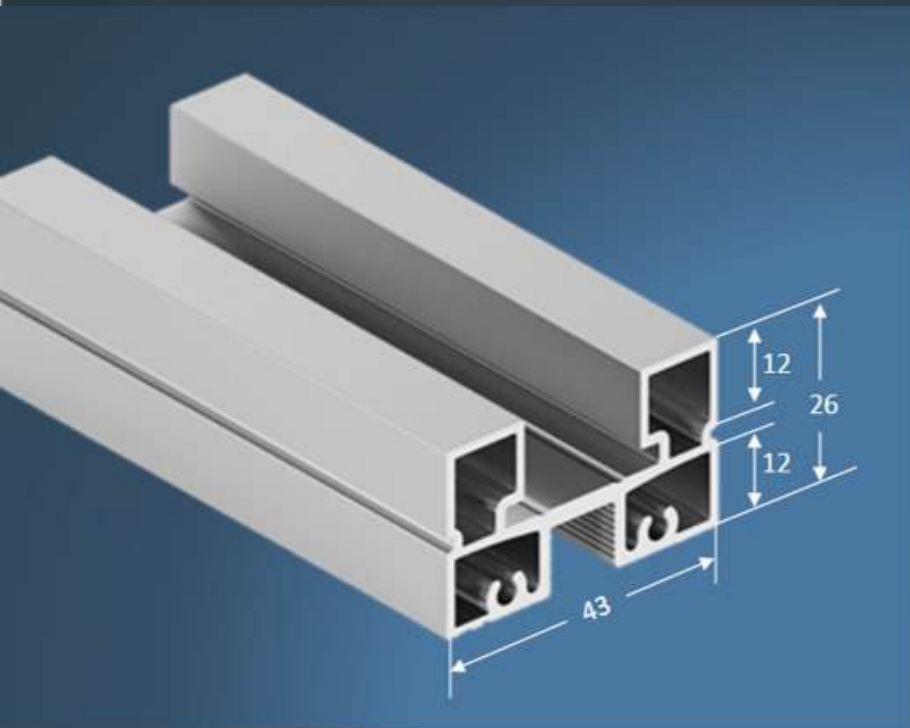




GRACE WITH ADHESIVE DIVIDER

Door assembly





Horizontal profile (top/bottom)*

Designed for fastening filling material and system fittings. Thanks to the runners, the elements are conveniently inserted and securely fastened to the profile

Filling material:

- Plate material 8 and 10 mm thick
- Glass or mirror 4 mm thick

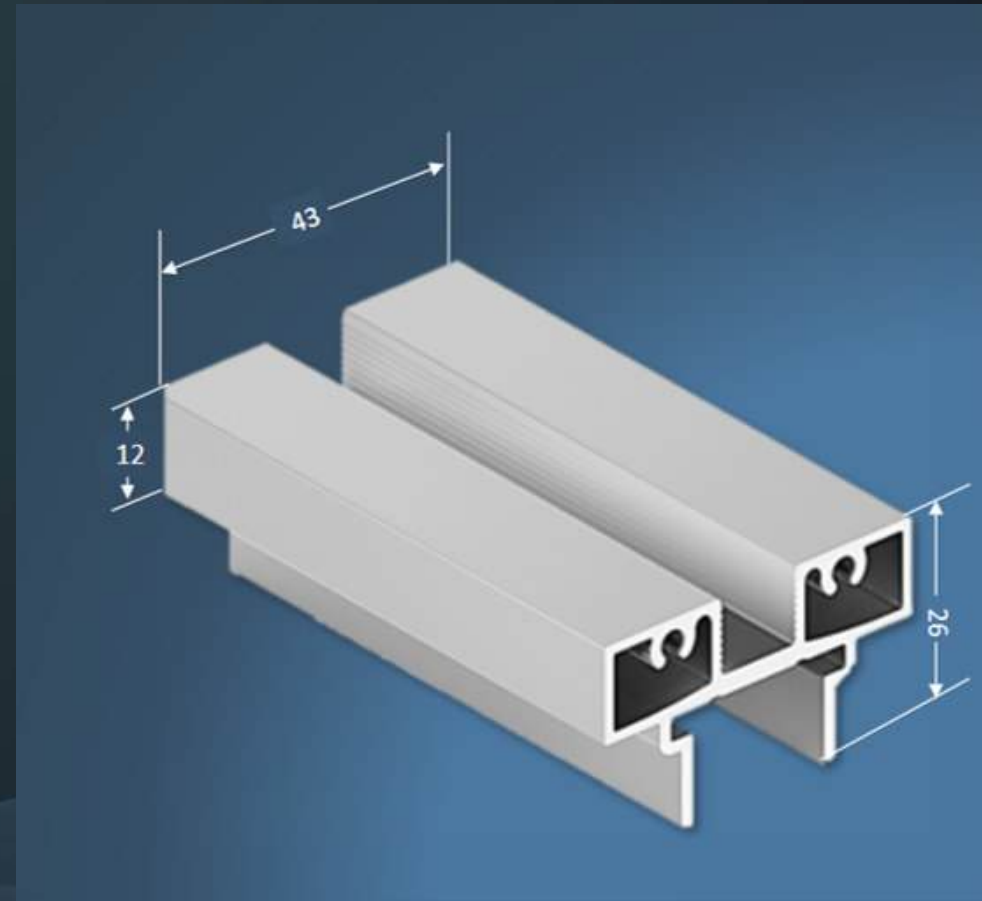
* Universal profile. Can be used as a top or bottom rail

Horizontal bottom rail

- The horizontal bottom rail is designed for fastening the filling material.
- The profile contains structural elements for different types of systems (double bottom roller of a sliding system, brackets for a fixed partition).
- It is firmly attached with self-tapping screws to the vertical profile.

Filling material:

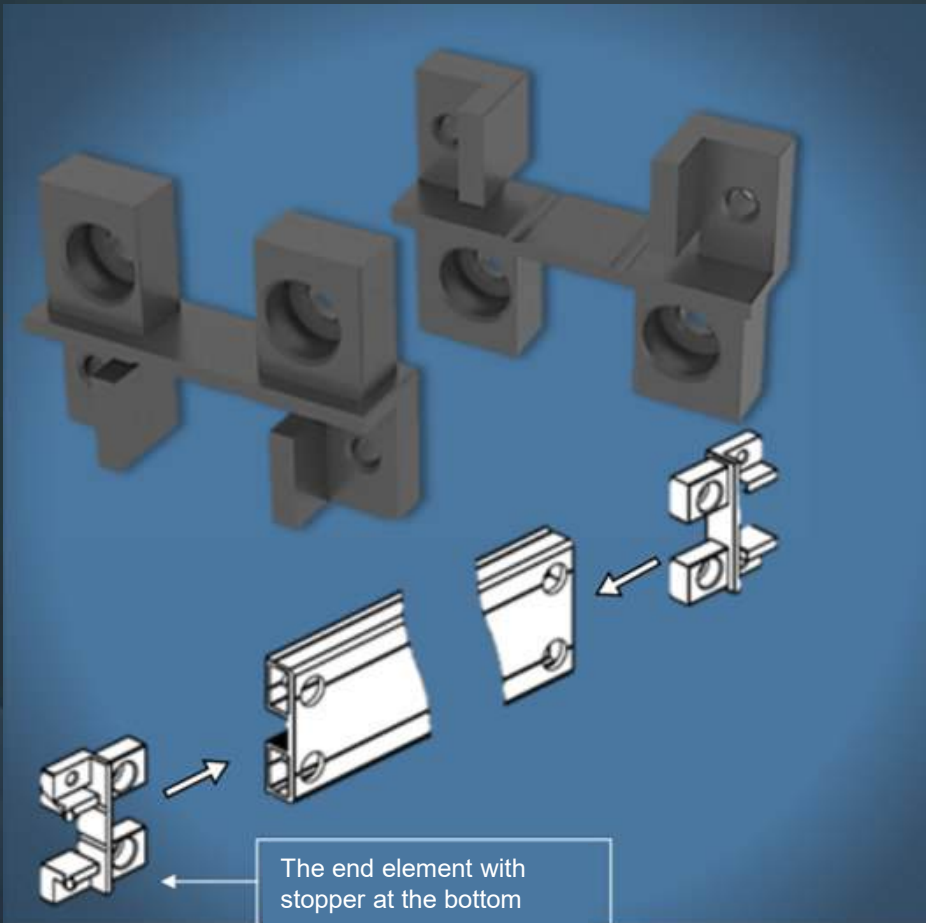
- Plate material 8 and 10 mm thick
- Glass or mirror 4 mm thick



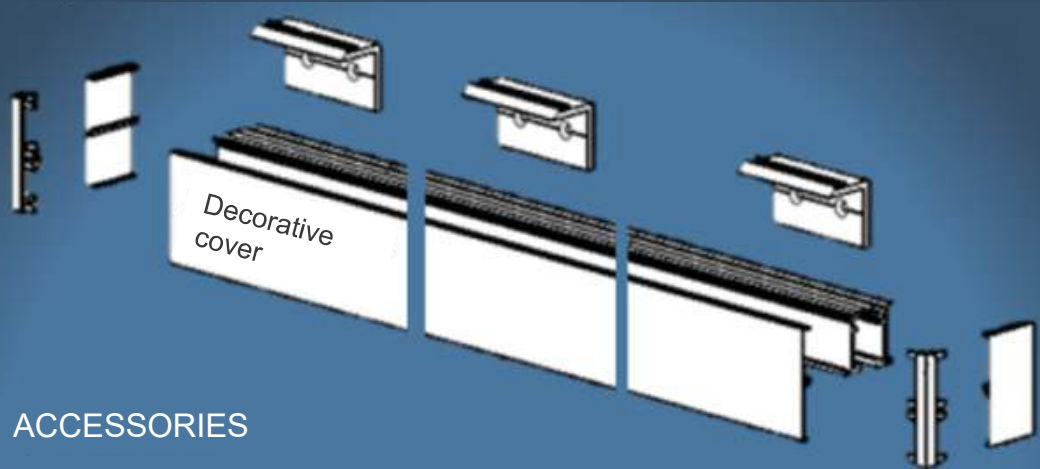
Vertical profile plug

The end elements serve as embedded parts for strong and reliable fastening of vertical and horizontal profiles to each other.

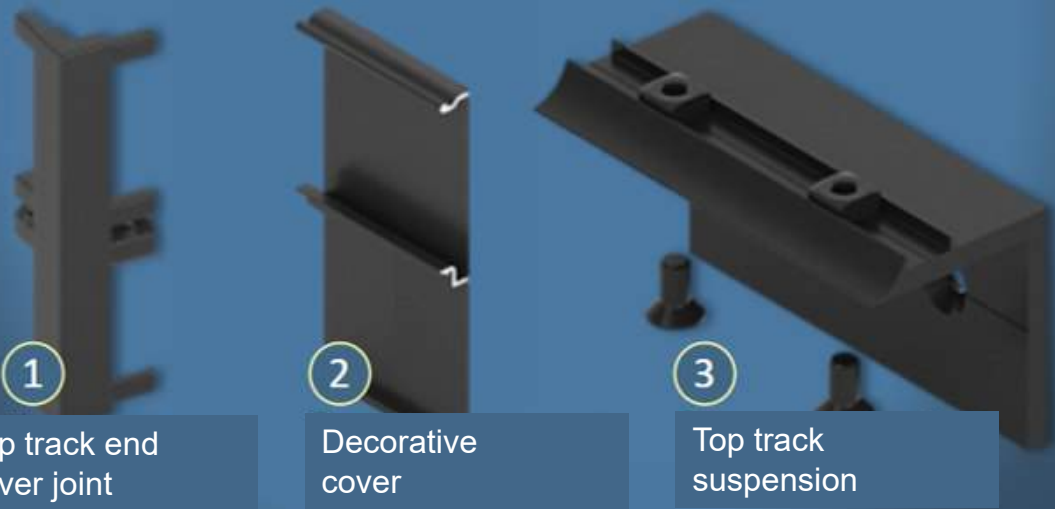
The end elements are inserted into the vertical profile. The profiles are placed over the filling and fixed to the frames with 4x30 self-tapping screws.



Wall mounting scheme



ACCESSORIES



Wall mounting

The track is attached to the wall using top track suspensions (3), which are installed every 500 mm from each other. The number of suspensions depends on the length of the track.

The visible ends of the track are closed with plugs (2) - cut out from the decorative cover. To fasten the plug, special top track end cover joints (1) are used.

Calculation of the required width of the door opening, embedded element

If doors are installed in an opening or through an embedded element, the required width is calculated using the formula:

$51 \times N + 12 \text{ mm}$
(N - number of tracks)

Calculation example for 2 tracks:
 $51 \times 2 + 12 = 114 \text{ mm}$



Top track

Dimensions 51 x 46 mm

Width with decorative covers 63 mm (easy installation of covers)

Possibility of mounting to a wall, ceiling, or in an opening

Ribs for installing the soft closer recurrent plate

Protrusions for concave roller wheels (chips and dirt in the track do not affect the roller movement)

Convenient fastening of the decorative cover

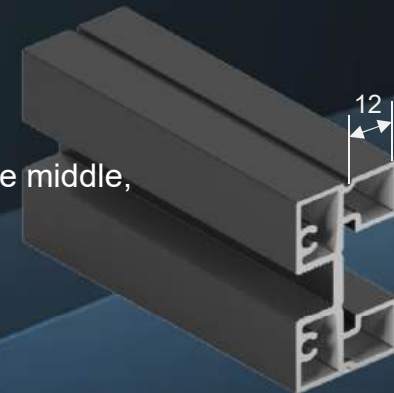
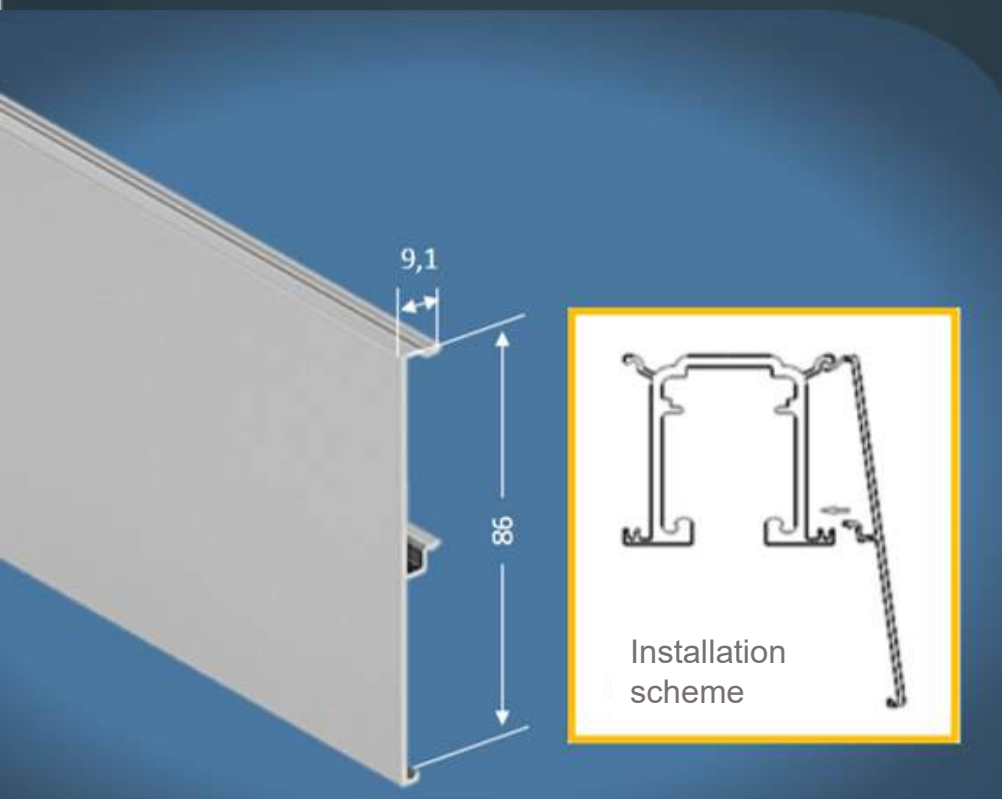


Decorative cover

The decorative cover on the top track gives the product a neat appearance and hides fasteners, mounting holes, roller hangers and opening mechanisms

The width of the top rail is 26 mm

The decorative plate covers it exactly to the middle, so the door frame looks harmonious – the visible part of the profiles is 12 mm



Top roller

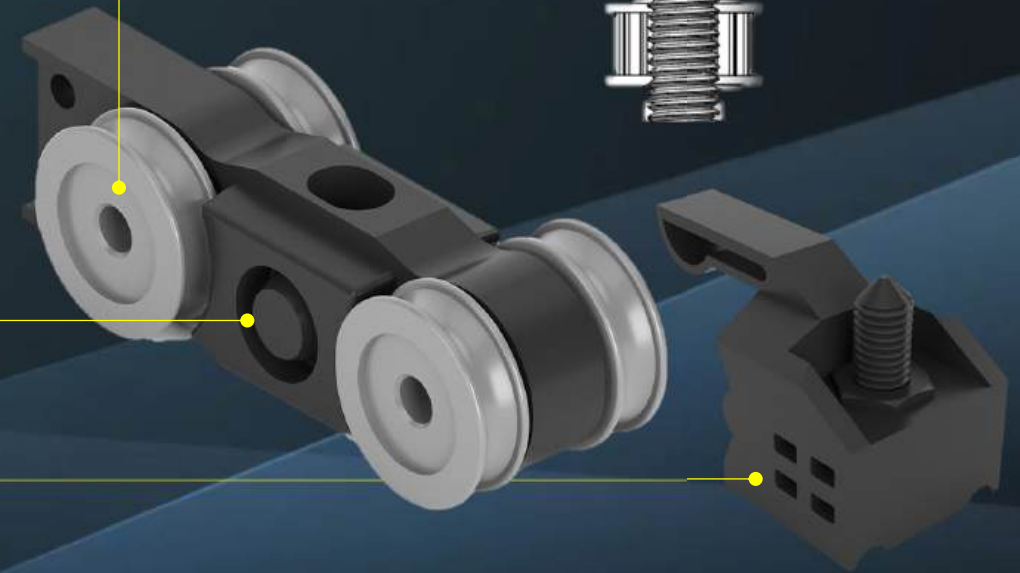
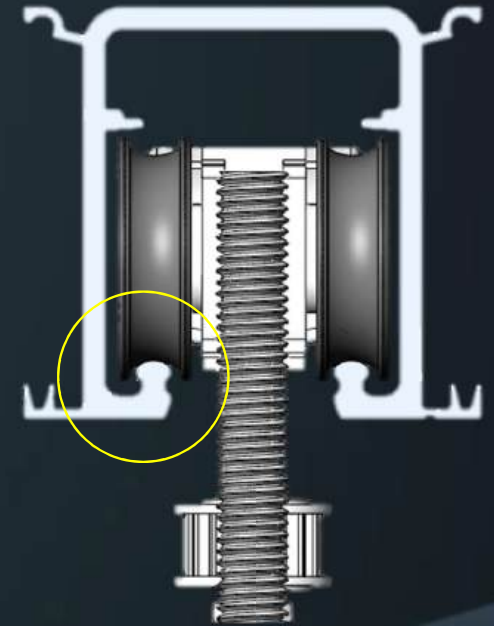
Reliability

- Robust die-cast zinc housing
- Each wheel is on a separate bearing
- Wheels made of wear-resistant plastic “POM”

POM (polyacetal) is a hard and impact-resistant plastic. Glides well and is abrasion resistant.

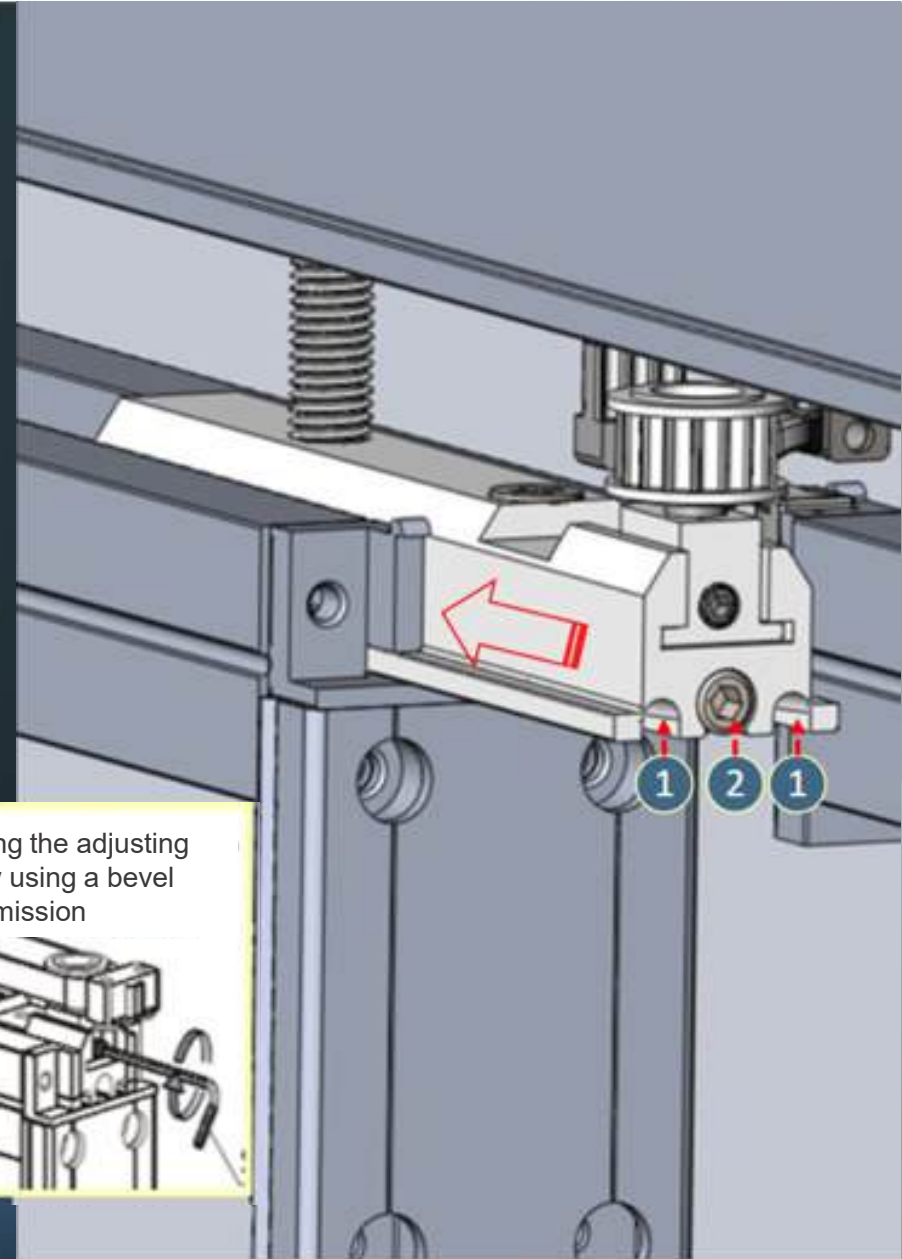
Smooth and quiet operation

- The concave profile of the working surface significantly reduces noise, vibrations during movement and the probability of track contamination.
- A soft damping bushing where the door attaches to the roller significantly reduces noise and vibration.
- The wheels are equipped with stoppers with a soft damper and fixation.
- Adjustment is +/- 5 mm.



Top hang

- The durable metal body has tracks for installation in the top horizontal frame of the door, which greatly eases installation.
- No lock nuts needed. The adjustment screw is rotated using a bevel transmission (driven by turning a hex key)
- Fasteners (1) and adjusting screw (2) - in an accessible place, at the end of the door



Positioner for top hung system

The purpose is to tightly fix the sliding partition.

The positioner is installed in the top track and secured with a spacer screw.

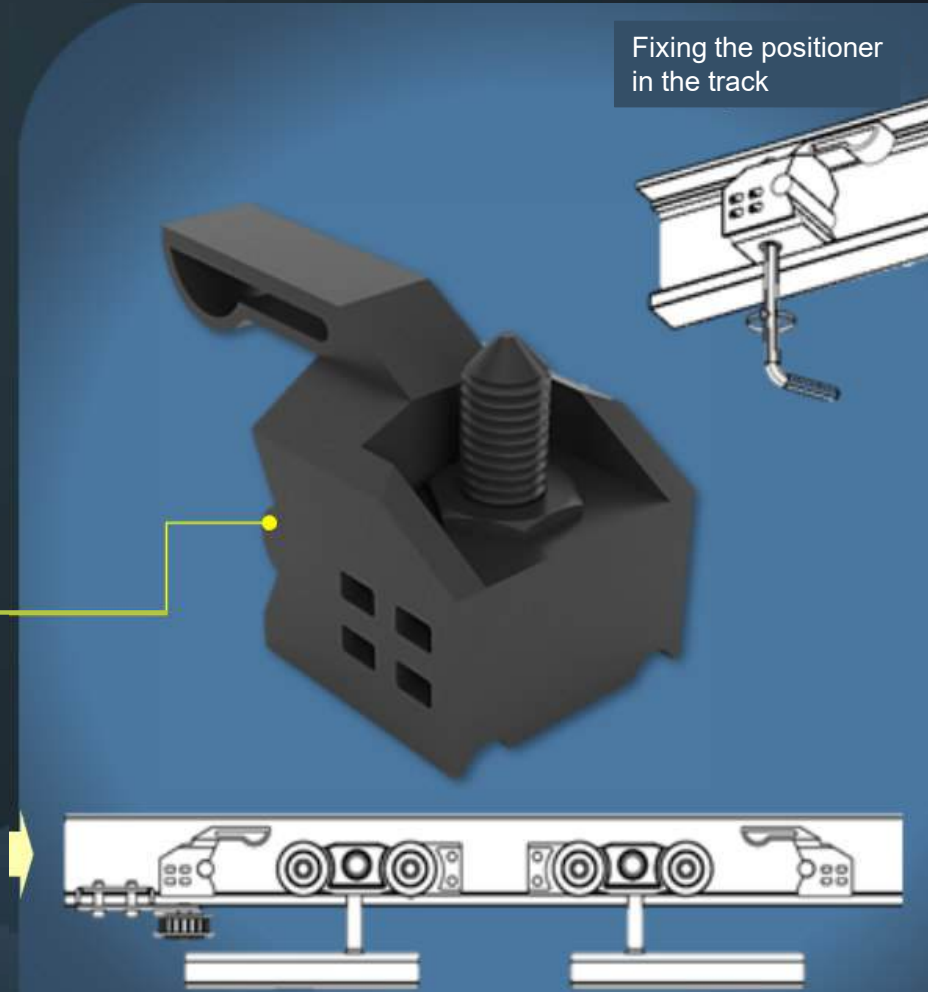
The adjusting screw allows you to change the fixation force of the roller with the positioner.

A **rubber bumper** built into the positioner softens contact with the roller.



It is recommended to use 2 stoppers for each door, both for open and closed positions in the absence of soft closers.

Fixing the positioner in the track



Soft closer

Promotes smooth, silent operation of the door and provides many benefits.

Including :

- Protects the door from impacts when closing. Strong bangs often lead to mechanical damage to the fabric and disrupt comfort.
- Guarantees the safety of door operation. The soft closer shuts the door softly and smoothly, so no one will get his fingers or clothes pinched.

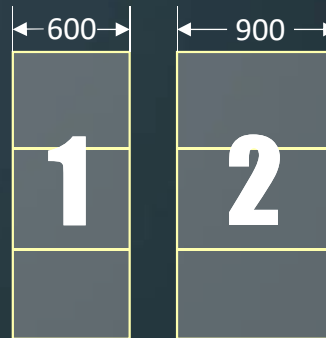
Robust steel housing

Wheels made of wear-resistant plastic POM

Spring rated for 100 kg load

Plastic grips reduce noise

Minimum door width for installation of soft closers:

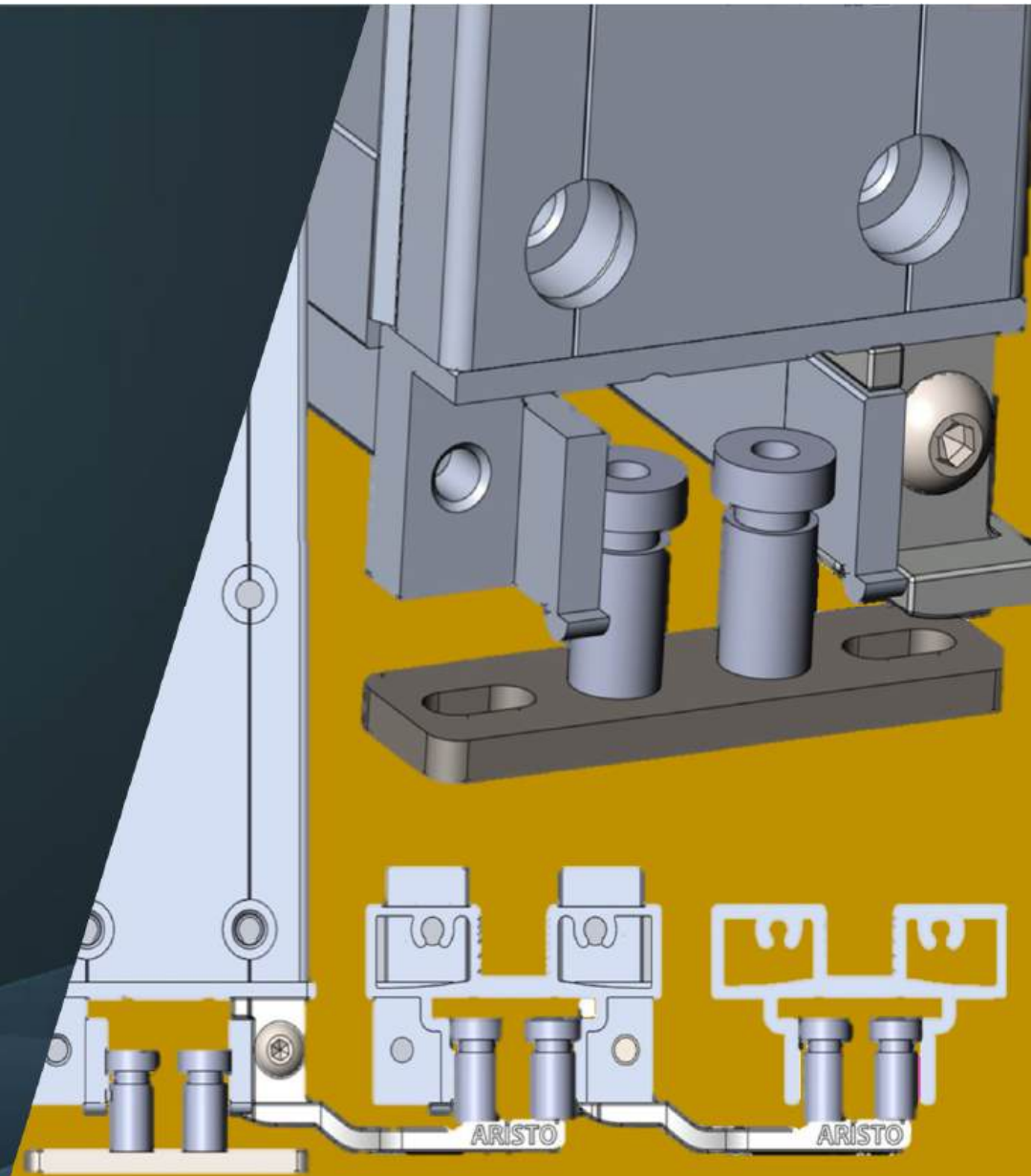


Number of soft closers for synchronous door opening



Bottom roller

- Double lower roller: rods and base made of steel, wheels Ø 8 mm made of high-strength plastic with bearings.
- Adjustment range is ± 5 mm
- An adjustment plate is provided for the bottom roller (slope leveling)
- Rollers for sequential opening are of similar quality



Overhead handle

The handle is glued onto the filling, fits neatly to the vertical profile and does not require additional drilling. The adhesive base is already applied to the handle. For installation you just need to remove the protective film.

Important! Before gluing the handle, you need to clean and degrease the surface

ADVANTAGES:

- Versatility.
- Easy installation. Does not require milling or additives.
- Stylish design. Graceful square section.
- Comfortable ergonomic grip.



For double-sided doors with transparent filling, two handles should be installed.

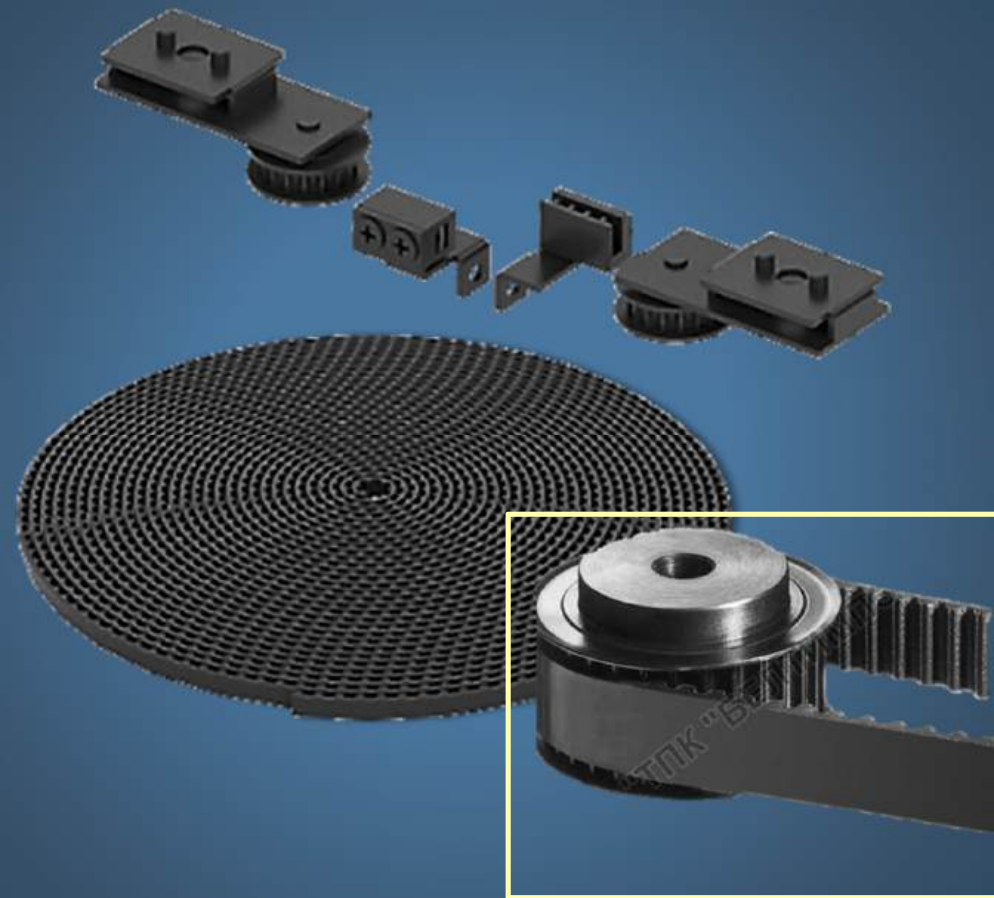


Synchronous mechanism

- Two doors open/close at once in one motion
- The doors are located on the same track in the same plane

Toothed belt

- More durable than metal cable
- Reinforced
- Reliable grip on toothed rollers



Synchronous opening

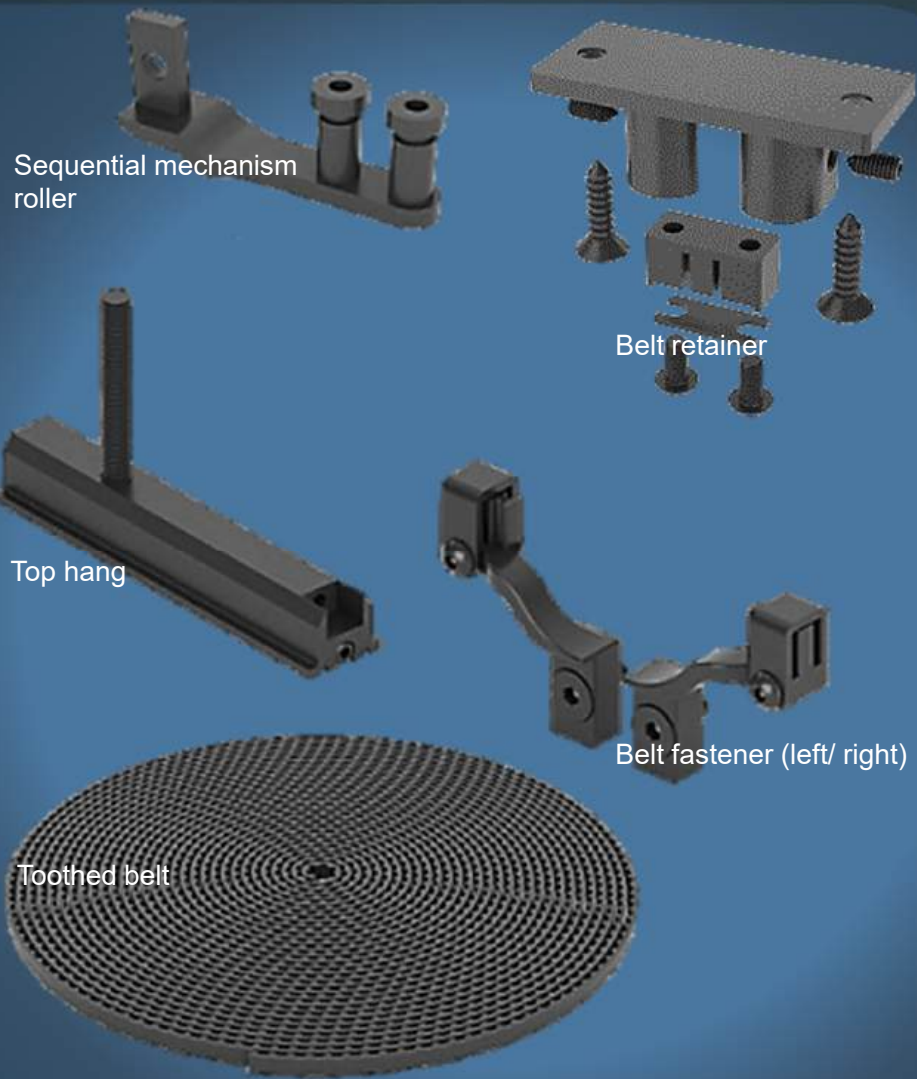


Synchronous opening



Synchronous opening





Sequential-synchronous opening mechanism

- Opening two or more doors sideways with one movement
- The doors are located on different tracks

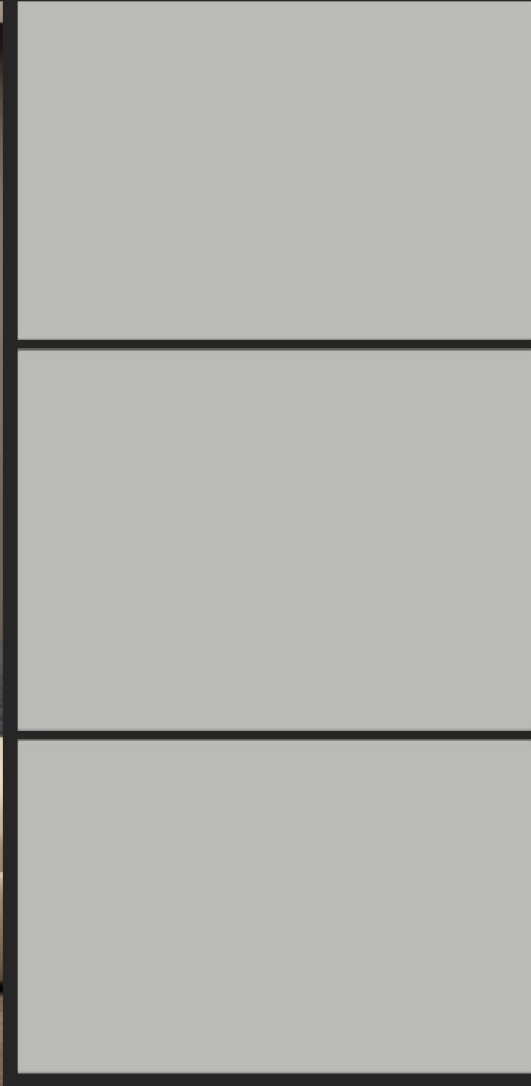
Toothed belt

- More durable than metal cable
- Reinforced
- Reliable grip with locking mechanism

Multi-sequential opening



Multi-sequential opening



Multi-sequential opening



Combined opening



Combined opening



Active door



Active door



Active door



GRACE system fixed partition

The system is suitable for dividing space and zoning rooms.

The partition is attached to the spacer between the floor and the ceiling, is quickly installed without damaging the walls and can be easily moved or dismantled.

The design performs the function of mobile walls, is safe and practical.

DIMENSIONS

Max height	3200 mm
Max width	1200 mm
Max weight	50 kg



GRACE

ADVANTAGES

- The width of the front surface of the vertical profile is only 12 mm (feeling light and spacious)
- Possibility of opening doors to full width. The doors are located one after another
- “Profile-to-profile” movement system
- No bottom track – no obstacles on the floor
- Implementing of innovations ensures unrivaled smoothness, silence and ease of movement
- Adhesive divider allows you to change the design and add zest to the interior

