

ENGLISH



ALLOY STEEL CASTINGS LTD.
NAIROBI, KENYA, EAST AFRICA

Alloy Steel Casting Limited is a steel castings foundry. It was established in 1990 to cater for the growing demand for both machine and as-cast steel castings in the global market.

It is located on a 7-acre industrial plot with a built-up area of 40,000 sq. feet. ASC has developed an enviable reputation over the years in various special casting and machined components, often working in conjunction with our clients to suit their local working conditions. We manufacture over 35 special steel and iron alloys for clients all over East and Central Africa, European Union and USA.



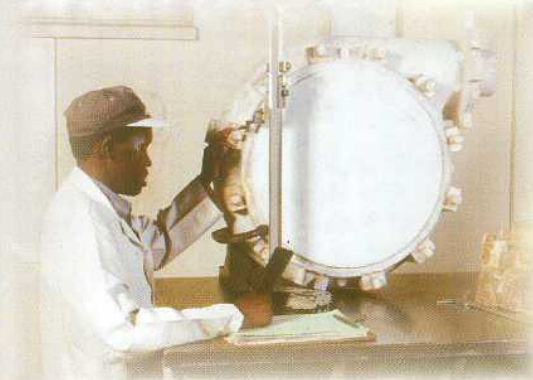
CAPACITY

Plant has a capacity of 120 tons per month.

PRODUCTION FACILITIES

PATTERN SHOP

Well-equipped wood and metal working machines for all pattern requirements.



MELTING

- ASC A 450kw medium frequency induction furnace with 2 crucibles, each of 1000kg capacity.
- ASC Ladle pre-heater with tea spout ladles
- ASC Calibrated 'immersion type' pyrometer
- ASC Three 2 ton melting capacity cupolas

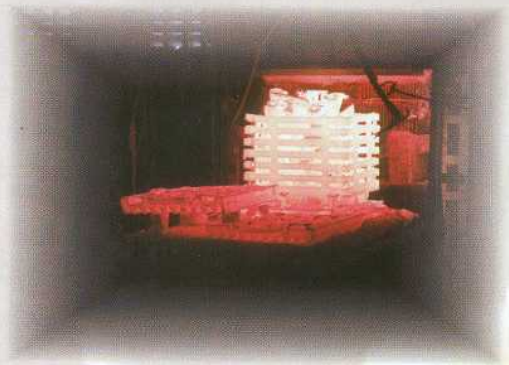
MOULDING

- ASC Semi-automatic 10 tons per hour continuous mixer
- ASC 20 tons per hour sand reclamation plant
- ASC 6 tons per hour sand classifier unit
- ASC Shell core shooter
- ASC Fully equipped sand testing laboratory



FETTLING

- ASC 2 units ceramic-lined 3 ton batch heat treatment furnaces
- ASC Electric and pneumatic high capacity grinders
- ASC Welding rectifiers



MACHINING FACILITY

- ASC 45 conventional lathe machines
- ASC 3 CNC lathe machines
- ASC 4 vertical lathe machines
- ASC 11 conventional milling machines
- ASC 2 CNC machining centers
- ASC Cylindrical grinding machines
- ASC Planners & shapers
- ASC Gear cutting and tooth grinding equipment
- ASC Drilling & grinding machines



QUALITY CONTROL

Non-Destructive testing:

- ASC Ultrasonic
- ASC Radiographic
- ASC Magnetic particle testing
- ASC Dye penetration testing
- ASC Pressure testing

Destructive testing

- ASC Dimensional inspection
- ASC Tensile, & impact testing
- ASC Bench & portable hardness testing
- ASC Vacuum emission spectrometer



QUALITY ASSURANCE

The plant is ISO 9001 certified and has a highly qualified assurance team.



MANPOWER

Manned by a personnel of about 200, led by local and international foundry experts

POSTAL ADDRESS

P.O. BOX 65163, 00618 Ruaraka, Baba Dogo Road, Nairobi, Kenya

CONTACT ADDRESS

Tel: (254)-2-861500/1/2/3/4/5, 861401/2

Fax: (254)-2-861507/861263,

E-mail: castings@alloysteel.com

Satellite Tel: No 00 873 762 653 388

Satellite Fax: No 00 873 762 653 386

SPECIFICATIONS

CARBON STEEL & LOW ALLOY STEEL

ASTM SPEC	ASTM GRADES	APPLICATION	DIN SPEC	DESIGNATION NUMBER	DESIGNATION NAME
A 216 / A216M	WCA	Valves & Fittings - Pressure containing	EN 10213-2	1.0621	GP240GR
A 216 / A216M	WCB		EN 10213-2	1.0619	GP240GH
A 216 / A216M	WCC		EN 10213-2	1.0625	GP280GH
A 217 / A 217M	WC6	Ferritic Steel - Pressure containing	EN 10213-2	1.7357	G 17 CrMo 5-5
A 217 / A 217M	WC9		EN 10213-2	1.7379	G 17 CrMo 9-10
A 217 / A 217M	C5		EN 10213-2	1.4931	Gx23 CrMoV 12-1
A 217 / A 217M	Ca15		EN 10213-2	1.4107	GX8CrNi12
A 352 / A 352M	LCB	Ferritic Martensitic Steel- Pressure containing and Low Pressure	EN 1023-3	1.1131	G17Mn5
A 352 / A 352M	CA6NM		EN 1023-3	1.6982	G X 3 CrNi 13-4

HIGH ALLOY STEELS

A 297 / A 297M	HD	Iron, Chromium, Nickel Steel - Heat Resistant	DIN 17465	1.4823	GX40NiCrSi27-4
A 297 / A 297M	HH		DIN 17465	1.4837	GX40NiCrSi25-12
A 297 / A 297M	HK		DIN 17465	1.4848	GX40NiCrSi25-20
A 297 / A 297M	HT		DIN 17465	1.4865	GX40NiCrSi38-18
A 351 / A 351M	CF3D	Austenitic Stainless Steel - Corrosion Resistant	EN 10213-4	1.4309	Gx2 CrNi 19-11
A 351 / A 351M	CF3M		EN 10213-4	1.4409	GX2CrNiMo 19-11-2
A 351 / A 351M	Cf8		EN 10213-4	1.4308	G-X5 CrNi 19 10
A 351 / A 351M	CF8M		EN 10213-4	1.4408	G-X5 CrNiMo 19-10-2
A 351 / a 351m	Ck20	Pressure Bearing Components	DIN 17465	1.4840	GX15CrNi25.20

ALLOY IRONS

A 532	CLASS II - A	Iron, Chromium, Alloy Iron - Wear Resistant	DIN 1695	0.9630	G-X 300 CrNiSi 9 5 2
A 532	CLASS II - B		DIN 1695	0.9635	G-X 300 CrMo 15 3
A 532	CLASS II - D		DIN 1695	0.9645	G-X 260 CrMoNi 20 2 1
A 536	65 - 45 - 12	Spheroidal Graphite Iron - Machinery Parts	DIN 1693	0.7040	GGG-40

CARBON STEEL

A 271/A 27M	70-40 (485-275)	General Engineering Applications	DIN 1681	1.1133	20Mn5
-------------	-----------------	-------------------------------------	----------	--------	-------

MANGANESE STEEL

A 128 Gr - E2	Mn3	Spares for Earth Moving and Quarries	ISO 13521	-	GX90MnMo14
A 128 Gr C	Mn2	Spares for Mining & Cement Industries	ISO 13521	-	GX120MnCr13-2
A 128 Gr B-2	Mn1	Spares for Oilwell Drilling & Dredging	ISO 13521	-	GX120Mn13

IRON

A 532 - 82	Ni - hard	Wear Plates for Heavy Duty Pumps	-	-	Ni-HiCr
A 48 - 30B	Cl	Spares to withstand dampening loads	Gg30	0.6020	EN-JL 1030
A 48 - 25B	Cl	Common Spares	GG15	0.6015	EN-JL 1020

Casting weight from single components of 5 kilograms upto 700kilograms. They can be made to the above specifications and many others as specified by the customer